



Brendon Bosch
084 819 8847
brendonbosch@dpg.co.za

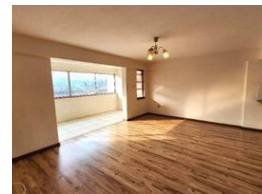
Contact Pinetown
031 8229071

39 Glenugie Road
Pinetown

SOLD



Web Ref DPR15646



R650,000

🛏️ 2 🚿 1.5 🚗 1

Monthly Bond Repayment R6,598.99

Calculated over 20 years at 10.75% with no deposit.

Transfer Costs R23,730.00

Bond Costs R17,680.00

These calculations are only a guide. Please ask your conveyancer for exact calculations.

Monthly Levy R2,584

Monthly Rates R622.0

NEAT 2 BED FLAT WITH GARAGE AT CHELSEA RETIREMENT VILLAGE

Carpeted throughout with 2 bedrooms (BIC). Full bathroom (Bath / shower / loo) + a 2nd loo / guest loo. Neat open plan kitchen. Spacious lounge, combine dining room. Enclosed balcony / sun lounge. L U Garage.

CHELSEA VILLAGE - Is a well-run (Sectional title) complex for independent seniors, working OR retired. Prospective clients must be a minimum age of 55 years & preferably no older than 75 years of age for initial acceptance.

However, buyers older than 75 may be considered, based on the individual health & merit + there is no medical required (You just need to be independent). The common facilities offer a social lounge. Dining hall with a breakfast of your choice, 3 course lunches (Monday to Friday). Library, hair salon & occasional entertainment.

CLOSE TO (Walking distance) Checkers Centre, Medi-cross & Crompton...

Features

Interior

Bedrooms	2
Bathrooms	1.5
Kitchens	1
Recep. Rooms	1
Furnished	No

Exterior

Garages	1
Security	No
Pool	No
Views	False

Sizes

Floor Size	75m²
------------	------