

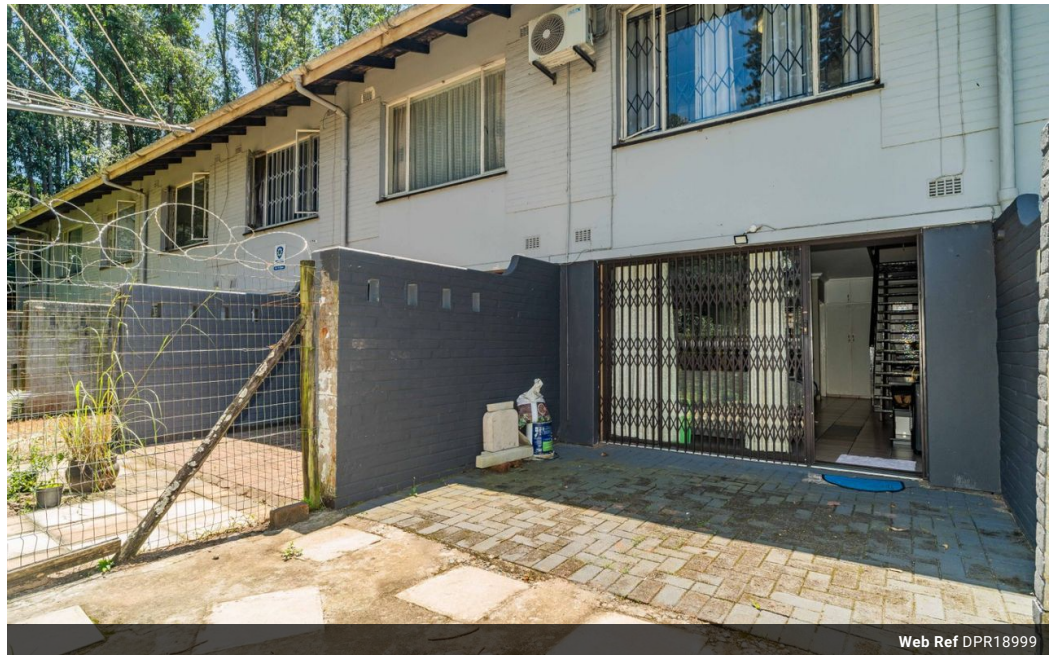


Lorraine Sparg
083 789 2504
lorrainesparg@dpg.co.za

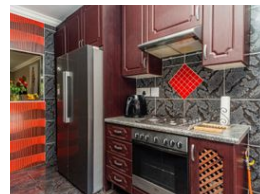
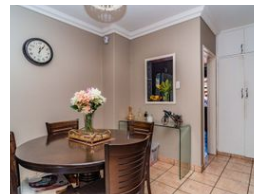
Contact Pinetown

031 8229071

39 Glenugie Road
Pinetown



Web Ref DPR18999



R750,000

2 1

Monthly Bond Repayment R7,614.22

Calculated over 20 years at 10.75% with no deposit.

Transfer Costs R25,898.00 **Bond Costs** R19,565.00

These calculations are only a guide. Please ask your conveyancer for exact calculations.

Monthly Levy R1,250 **Monthly Rates** R570

DELIGHTFUL DUPLEX.

Tiled throughout, offers 2 beds, 1.5 bath, lounge opens to small garden, dining area, stunning fully fitted kitchen, 1 undercover parking, all this set within a secure complex close to shops, schools and easy freeway access... well worth viewing.

Features

Pets Allowed Yes

Interior

Bedrooms	2
Bathrooms	1
Kitchens	1
Recep. Rooms	1
Furnished	No

Exterior

Carports / Parkings	1
Security	No
Pool	No
Views	False

Sizes

Floor Size	101m²
------------	-------