



Brendon Bosch
084 819 8847
brendonbosch@dpg.co.za

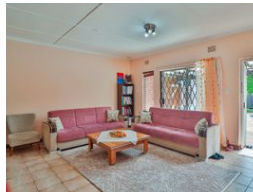
Contact Pinetown

031 8229071

39 Glenugie Road
Pinetown



Web Ref DPR6310



R1,330,000

3 2 1

Monthly Bond Repayment R13,502.55

Calculated over 20 years at 10.75% with no deposit.

Transfer Costs R38,517.00 **Bond Costs** R27,105.00

These calculations are only a guide. Please ask your conveyancer for exact calculations.

Monthly Levy R2,092 **Monthly Rates** R1,200

Fully tiled 125sqm unit situated in popular suburb of The Wold.

Delightful Simplex with large garden and private pool in well maintained complex of 12 units.

Spacious lounge with A/C, open plan to dining area and stylish fitted kitchen offering UCO, 5 plate gas hob and extractor fan, good sized bedrooms with Bic's, family bathroom and modern MES with his and hers shower.

Blinds on all windows, satellite dish and access to optic fibre.

Covered patio and back garden auto garage and parking for 3 cars. Alarm system & private pool.

Features

Interior		Exterior		Sizes	
Bedrooms	3	Garages	1	Floor Size	125m ²
Bathrooms	2	Carports / Parkings	3		
Kitchens	1	Security	Yes		
Recep. Rooms	1	Pool	Yes		
Furnished	No	Views	False		