

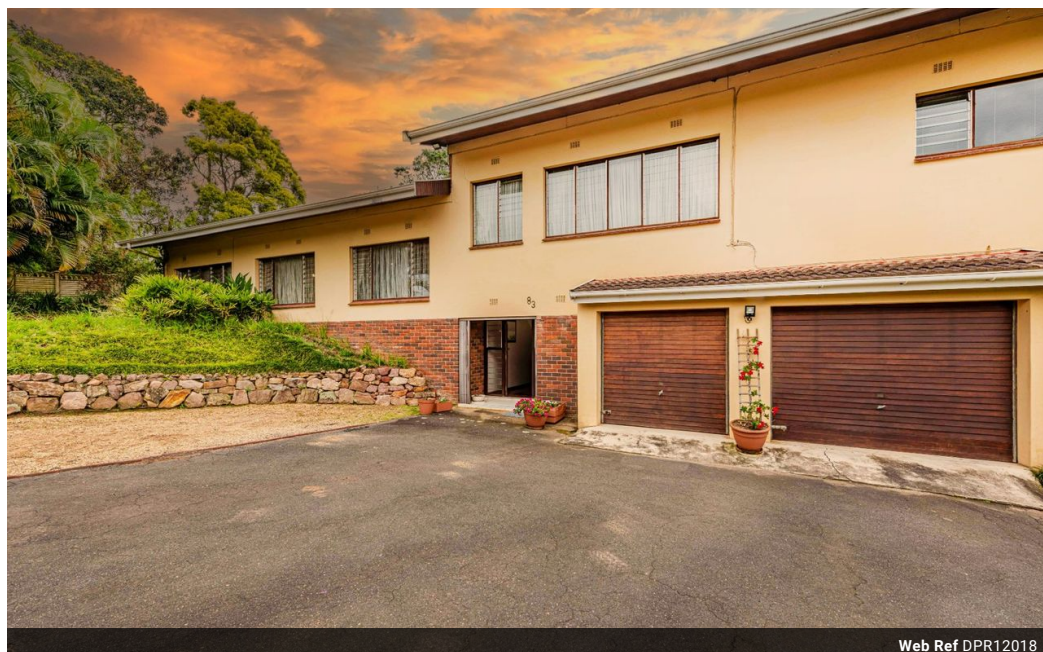


Anne Heyes
083 9635330
annehey@dpd.co.za

Contact Westville A-Team

031 2664343

1 Knightbridge,
16 Westville Road,
Westville



Web Ref DPR12018



R2,595,000

3 3 2

Monthly Bond Repayment R26,345.19

Calculated over 20 years at 10.75% with no deposit.

Transfer Costs R123,320.00 **Bond Costs** R38,415.00

These calculations are only a guide. Please ask your conveyancer for exact calculations.

Monthly Rates R2,200

Welcome to your future oasis on Woodside Avenue

Welcome to your future oasis on Woodside Avenue – where lifestyle meets cozy charm. This delightful family home is perfectly situated near all the amenities you could dream of, including schools, shops, and easy access to highways. As you step through the front door, the entrance boasts high ceilings that invite an abundance of natural light, setting the stage for making priceless memories with your loved ones.

Features

Pets Allowed		Yes			
Interior				Exterior	
Bedrooms	3			Garages	2
Bathrooms	3			Carports / Parkings	2
Kitchens	1			Security	Yes
Recep. Rooms	3			Dom. Accom.	1
Studies	1			Pool	Yes
Furnished	No			Views	False
				Sizes	
				Land Size	1,629m²