



Denga Mukwevho
081 765 5618
dengam@dpg.co.za

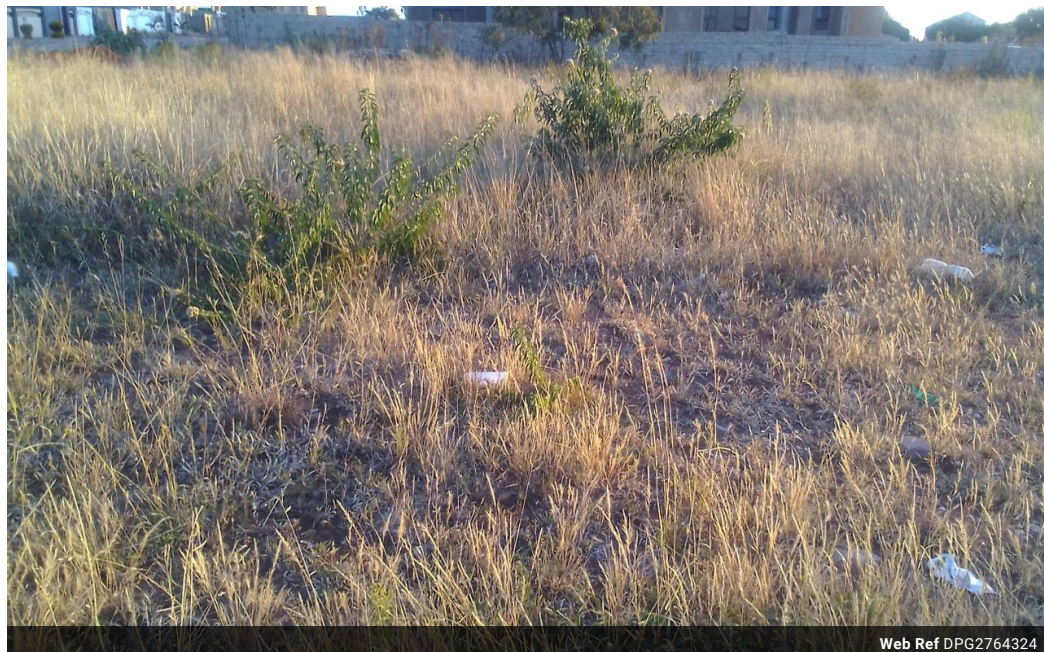


Denga Mukwevho
081 765 5618
dengam@dpg.co.za

Contact Polokwane

081 7655618

20 Hill Street
Laddana
Polokwane



Web Ref DPG2764324



R870,000

Monthly Bond Repayment R8,832.49

Calculated over 20 years at 10.75% with no deposit.

Transfer Costs R28,244.00 **Bond Costs** R21,450.00

These calculations are only a guide. Please ask your conveyancer for exact calculations.

House for sale

A very well located corner stand in Serala view of 958 meter square which can be used for business purposes like town houses or accommodation and family house purpose.

this stand is located within Serala view suburb, a very beautiful and highly developed at the proximity of 4km away from Netcare Hospital, 5km away from Savana Mall, Serala view is a suburb along N1, you would love the view of this place, whilst viewing on the website, upon your interest do not hesitate to contact me for viewing.

Features

