



**Celia Kotze**  
083 442 8016  
celiakotze@dpg.co.za

Contact Rustenburg

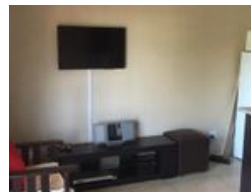
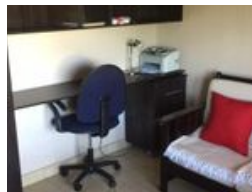
014 5942402

Mystic Blue Office Park  
220 Beyers Naude Drive  
Rustenburg  
0229

## FEATURED



Web Ref DRBG-0303



## R620,000

1 1

**Monthly Bond Repayment** R6,294.42

Calculated over 20 years at 10.75% with no deposit.

**Transfer Costs** R23,730.00 **Bond Costs** R17,680.00

These calculations are only a guide. Please ask your conveyancer for exact calculations.

**Monthly Levy** R751 **Monthly Rates** R320

## Stunning Flat

This cozy 1 bedroom, 1 bathroom flatlet is a must to view. Close to various amenities, this unit offers open plan living and dining area with study nook, kitchen with granite tops, gas stove, washing machine, beautiful finishes and fully tiled. Entire complex is monitored by CCTV cameras and electric fencing. If you are looking for a safe haven, you have come to the right place.

## Features

### Interior

Bedrooms	1
Bathrooms	1
Recep. Rooms	2
Furnished	No

### Exterior

Carports / Parkings	1
Security	Yes
Pool	No
Views	No

### Sizes

Floor Size	41m <sup>2</sup>
------------	------------------

