



Julia Sefuthi
068 216 8782
julias@dpg.co.za

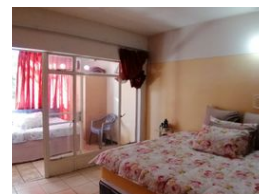
Contact Klerksdorp

083 2642457

8 De Wet Street
Stilfontein
2551



Web Ref DPR12012



R550,000

2 1

Monthly Bond Repayment R5,583.76

Calculated over 20 years at 10.75% with no deposit.

Transfer Costs R21,217.00

Bond Costs R15,795.00

These calculations are only a guide. Please ask your conveyancer for exact calculations.

Monthly Levy R1

Monthly Rates R1

Sectional Title Levy R1

Special Levy R1

Beginners Dream

This spacious 2-bedroom flat in Potchefstroom Central offers comfortable living close to various amenities including the university and Vuselela College. Both bedrooms are generously sized with built-in cupboards, ensuring ample storage space. Additionally, there's a large enclosed patio accessible from both the main bedroom and lounge, currently utilized as a third bedroom. One bathroom with a toilet, a bath and a basin. The open plan lounge and dining area provide a welcoming atmosphere, complemented by a modern, well-sized kitchen. The flatlets are well-maintained and secure, featuring security cameras for added peace of mind. This property presents a convenient and inviting living space in a sought-after location. Call today to book your viewing appointment and call this place your new home.

Features

Interior

Bedrooms	2
Bathrooms	1
Kitchens	1
Recep. Rooms	1.5
Furnished	No

Exterior

Carports / Parkings	1
Security	Yes
Pool	No
Views	False

Sizes

Floor Size	1m²
Land Size	89m²

