



Caroline De Beer
082 414 3963
carolinedebeer@dpg.co.za

Contact Head Office - Dormehl
Lite

012 0000000

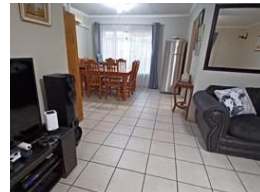
1170 Moulton Avenue
Waverley
0184

3 Bedroom Apartment For Sale in Annlin

NEW



Web Ref DPR21047



R1,590,000

3 2 2

Monthly Bond Repayment R15,874.24

Calculated over 20 years at 10.5% with no deposit.

Transfer Costs R48,587.00 **Bond Costs** R28,990.00

These calculations are only a guide. Please ask your conveyancer for exact calculations.

Monthly Levy R1,771 **Monthly Rates** R915 **Sectional Title Levy** R1
Special Levy R1

"Spacious, Secure & Perfectly Positioned – Your 3-Bedroom Annlin Townhouse Awaits!"

This freestanding townhouse offers comfort, space, and peace of mind – perfect for families or those seeking low-maintenance living.

Property Features:

3 bedrooms

2 bathrooms

Lounge and separate dining room

Covered stoep with built-in braai

Freestanding double garage with additional parking

Wrap-around garden (pet friendly – no cats)

Access to complex pool and communal facilities

Features

Pets Allowed Yes

Interior

Bedrooms	3
Bathrooms	2
Kitchens	1
Recep. Rooms	2
Furnished	No

Exterior

Garages	2
Carports / Parkings	2
Security	No
Pool	Yes
Views	False

Sizes

Floor Size	145m ²
Land Size	55,486m ²

