



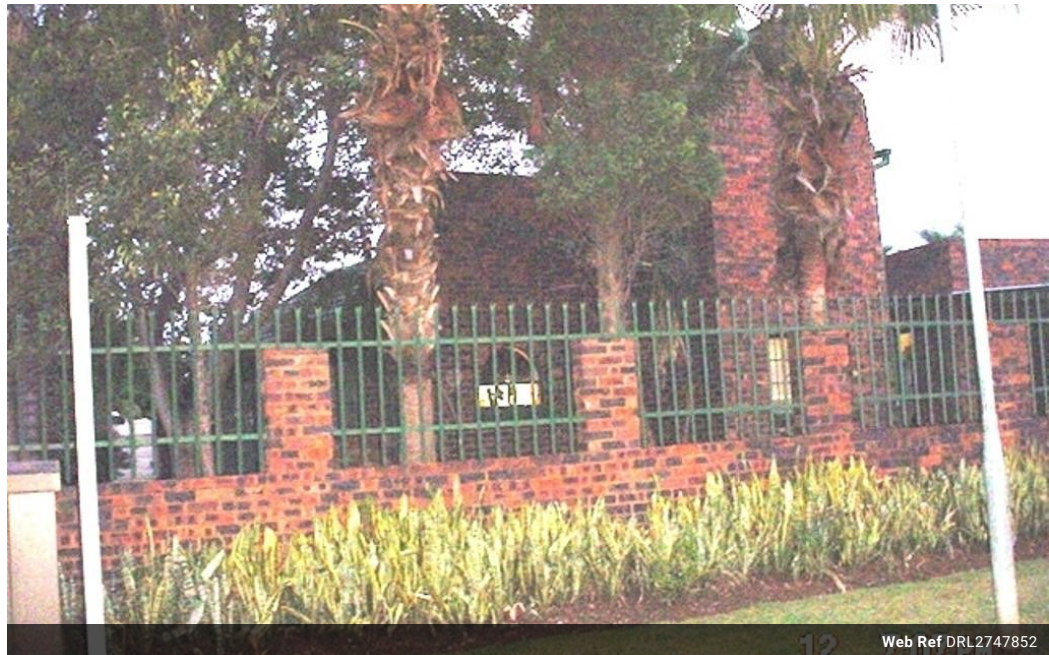
Hettie Chadinha
082 447 6021
hettiec@dpg.co.za

Contact Head Office - Dormehl
Lite

012 0000000

1170 Moulton Avenue
Waverley
0184

4 Bedroom Freestanding For Sale in Annlin



Web Ref DRL2747852



R1,370,000

Monthly Bond Repayment R13,908.64

Calculated over 20 years at 10.75% with no deposit.

Transfer Costs R39,717.00 **Bond Costs** R27,105.00

These calculations are only a guide. Please ask your conveyancer for exact calculations.

🛏 4 🚿 2 🏠 2

DON'T MISS OUT ON THIS EXCELLENT PRICED PROPERTY!

Value for your money! This cozy clinker brick house is situated in Annlin, just next to Sinoville suburb. It consist of 3 bedrooms, loft upstairs, study, 2 bathrooms, open plan kitchen with living areas, gas stove, scullery, separate laundry room. It has modern finishes with beautiful tiles throughout. It also has a sparkling swimming pool with a lapa, garden, double garage and double carport. Near schools, hospital, and all other ammenities. Sub-tropical fast developing area! Easy access to all main routes.

Features

Pets Allowed Yes

Interior

Bedrooms	4
Bathrooms	2
Kitchens	1
Recep. Rooms	2
Studies	1
Furnished	No

Exterior

Garages	2
Carports / Parkings	2
Security	No
Pool	Yes
Views	Yes

Sizes

Floor Size	192m ²
Land Size	539m ²

