



Caroline De Beer
082 414 3963
carolinedebeer@dpg.co.za

Contact Head Office - Dormehl
Lite

012 0000000

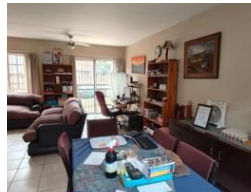
1170 Moulton Avenue
Waverley
0184

2 Bedroom Townhouse For Sale in Annlin

NEW



Web Ref DPR20842



R930,000

2 2 2

Monthly Bond Repayment R9,284.93

Calculated over 20 years at 10.5% with no deposit.

Transfer Costs R30,502.00 **Bond Costs** R23,335.00

These calculations are only a guide. Please ask your conveyancer for exact calculations.

Monthly Levy R1,471 **Monthly Rates** R538 **Sectional Title Levy** R1
Special Levy R1

Double Storey Unit!

Stunning 2 bedroom, 2 bathroom pet-friendly townhouse, corner stand

This stunning 2 bedroom, 2 bathroom townhouse is situated on a BIG CORNER STAND in a PRIME LOCATION in Annlin. With spacious interiors, modern finishes and an outdoor entertainment area, this property offers the ideal blend of comfort and convenience. No transfer duty.

The key features are:

2 Spacious Bedrooms (main en-suite)

Bright and airy, both with air-conditioning and built-in Cupboards

Tastefully designed and tiled

2 Living Areas

Generous, open-plan spaces for relaxing, dining and family time

Modern Kitchen

Features

Pets Allowed Yes

Interior

Bedrooms 2
Bathrooms 2
Kitchens 1
Recep. Rooms 2
Furnished No

Exterior

Garages 2
Carports / Parkings 1
Security Yes
Pool No
Views False

Sizes

Floor Size 115m²
Land Size 200m²

