

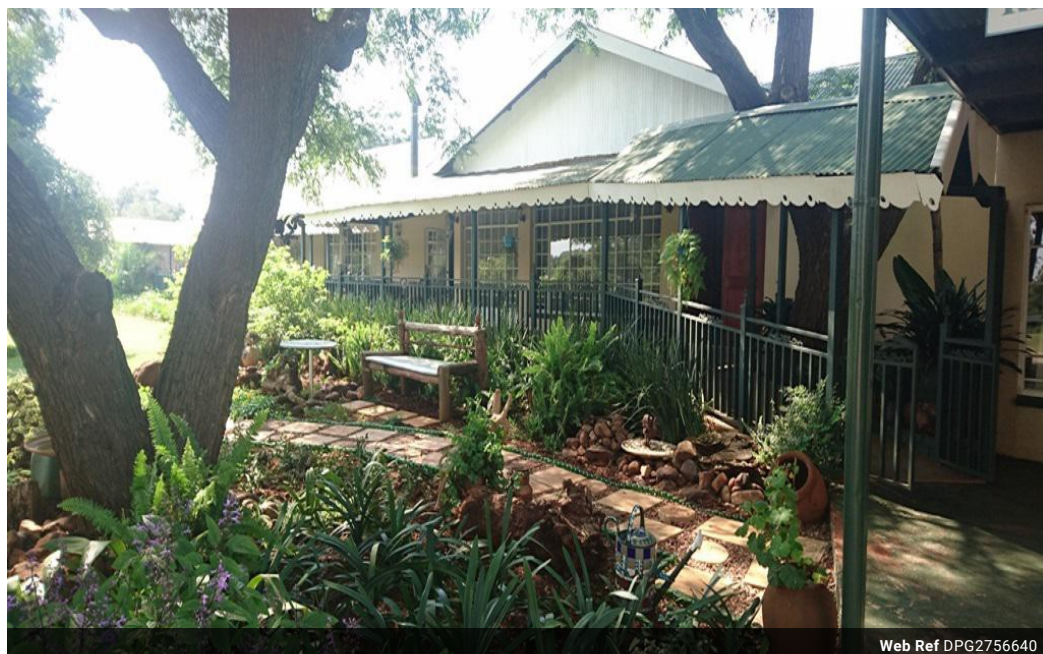


Hettie Chadinha
082 447 6021
hettiec@dpg.co.za

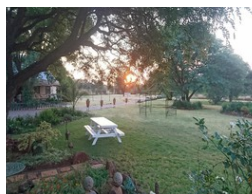
Contact Pretoria Moot

012 3323677

1170 Moulton Ave
Waverley
Pretoria
0186



Web Ref DPG2756640



R7,800,000

8 8

Monthly Bond Repayment R79,187.86

Calculated over 20 years at 10.75% with no deposit.

Transfer Costs R727,228.00 **Bond Costs** R75,285.00

These calculations are only a guide. Please ask your conveyancer for exact calculations.

Monthly Rates R2,800

GOLDEN OLDY GUEST HOUSE WITH LOTS OF POTENTIAL!

Come and watch the sunset from the outside patio of main building, beautiful garden, chapel and big hall. This guesthouse is situated in Derdepoort, size 1,73 ha. Consist of the following: 8 bedrooms with tv's, bathrooms that includes a huge bridal room, big bathroom and reading room. 2 Of the bedrooms with bathrooms and tv's are separate from the main building. Big lounge and dining room with fire place, and bar area which are used for smaller functions and leads to another patio with built in braai, and a sparkling swimming pool. Guest house also has a kitchen, pantry and scullery. An extra flatlet was recently built with 4 beds, bathroom and kitchenette. Big hall that can easily seat 120 people and consist of a kitchen, stoves, fridges, storeroom, bar, aircon and fan and 4 toilets outside for guests.Extras: 10000 liter...

Features

Pets Allowed		Yes			
Interior		Exterior		Sizes	
Bedrooms	8	Carports / Parkings	4	Land Size	10,730m²
Bathrooms	8	Security	Yes		
Kitchens	2	Dom. Accom.	2		
Recep. Rooms	2	Pool	Yes		
Studies	1	Views	Yes		
Furnished	Yes				
Extras					
Jo-Jo tank, generator, big garden shed					

