

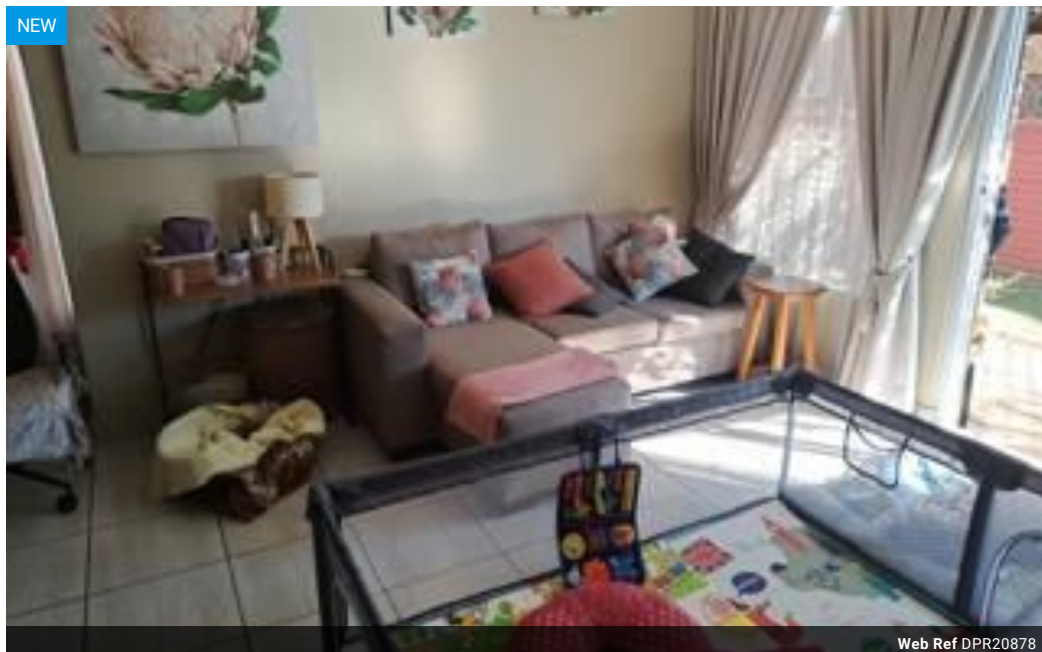


Caroline De Beer
082 414 3963
carolinedebeer@dpg.co.za

Contact Head Office - Dormehl
Lite

012 0000000

1170 Moulton Avenue
Waverley
0184



Web Ref DPR20878



R920,000

3 Bedrooms 2 Bathrooms 1 Garage

Monthly Bond Repayment R9,185.09

Calculated over 20 years at 10.5% with no deposit.

Transfer Costs R30,502.00 **Bond Costs** R23,335.00

These calculations are only a guide. Please ask your conveyancer for exact calculations.

Monthly Levy R1,692 **Monthly Rates** R516 **Sectional Title Levy** R23.8
Special Levy R522

Good place to talk money!

Secure 3-Bedroom Townhouse in the Heart of Doornpoort

Enjoy comfort, convenience, and peace of mind in this charming townhouse, perfectly located in a secure complex close to schools, shops, and main transport routes.

Property Features

3 Spacious Bedrooms with built-in cupboards

2 Bathrooms for added convenience

Open-Plan Lounge & Dining Area – ideal for family time

Functional Kitchen with ample cupboard space

Covered Patio – perfect for relaxing or entertaining

Private Garden – safe for kids and pets

Features

Interior

Bedrooms	3
Bathrooms	2
Kitchens	1
Recep. Rooms	2
Furnished	No

Exterior

Garages	1
Carports / Parkings	1
Security	No
Pool	No
Views	False

Sizes

Floor Size	102m ²
Land Size	200m ²

