



**Angelique Wessels**  
071 434 4274  
angeliquewessels@dpg.co.za

Contact Pretoria Moot

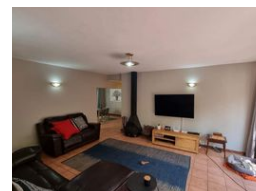
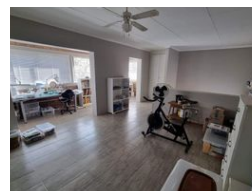
012 3323677

1170 Moulton Ave  
Waverley  
Pretoria  
0186

FEATURED



Web Ref DPR14832



**R2,789,000**

3 Bedrooms 2 Bathrooms 2 Carports

**Monthly Bond Repayment** R27,844.82

Calculated over 20 years at 10.5% with no deposit.

**Transfer Costs** R141,148.00 **Bond Costs** R40,300.00

These calculations are only a guide. Please ask your conveyancer for exact calculations.

**Monthly Rates** R1,245

**Gorgeous Home in Faerie Glen with All Extras, Solar, JOJO Tank, Pool and Entertainment Area**

This Perfect, Well maintained home offers so much including solar, a water tank and separate entertainment area with pool!

Leave behind the concerns of load shedding in this stunning family home, located in the highly desirable Faerie Glen neighborhood. This distinctive property boasts a variety of features designed to elevate your living experience!

This gorgeous home offers an entertainment area suitable for Winter and Summer occasions, with a swimming pool and built in braai.

All 3 bedrooms are fitted with air conditioners and gracefully tiled in uniformity. There is a spacious, light additional room upstairs which could be perfect for an office from home, a gym or a separate living area.

The open plan lounge and dining creates easy flow living and has the bonus of a warm and cozy fireplace. The modern kitchen displays...

## Features

Pets Allowed		Yes			
Interior				Exterior	
Bedrooms	3			Garages	2
Bathrooms	2			Carports / Parkings	2
Kitchens	1			Security	No
Recep. Rooms	2			Pool	Yes
Studies	1			Views	False
Furnished	No				
				Sizes	
				Floor Size	249m <sup>2</sup>
				Land Size	1,140m <sup>2</sup>

