



Hettie Chadinha
082 447 6021
hettiec@dpg.co.za

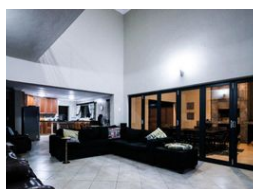
Contact Head Office - Dormehl
Lite

012 0000000

1170 Moulton Avenue
Waverley
0184



Web Ref DMON-0008



R2,300,000

Monthly Bond Repayment R23,350.27

Calculated over 20 years at 10.75% with no deposit.

Transfer Costs R98,138.00 **Bond Costs** R36,530.00

These calculations are only a guide. Please ask your conveyancer for exact calculations.

🛏 4 🚿 3 🏠 3

BRAND NEW HOUSE WITH SPECTACULAR VIEW!

PRICE DRASTICALLY REDUCED! Location, location, location.! Brand new spacious, modern 4 bedroom double storey house with spectacular view from mountain side in Florauna, on Northern side of Pretoria, for sale. The Main spacious bedroom has a walk in closet and balcony. 2 Of the bedrooms has enough space for a tv room or private lounge. 3 Full bathrooms, all being connected to al 300L solar geyser. Open reading area. Open plan big kitchen with solid Marhanti wood, granite tops, gas stove and an electric ELO. Breakfast nook. Scullery. Spacious living areas, enclosed braai room that is fitted with stack doors that leads to the entertainment room and garden with boma. Three garages, one is big enough for a caravan or boat, plus a work area. Automated entrance gate, perimeter beams. Paving, garden. If you like space, this is...

Features

Pets Allowed		Yes			
Interior		Exterior		Sizes	
Bedrooms	4	Garages	3	Floor Size	400m²
Bathrooms	3	Security	Yes	Land Size	600m²
Recep. Rooms	2	Pool	No		
Furnished	No	Views	Yes		

