

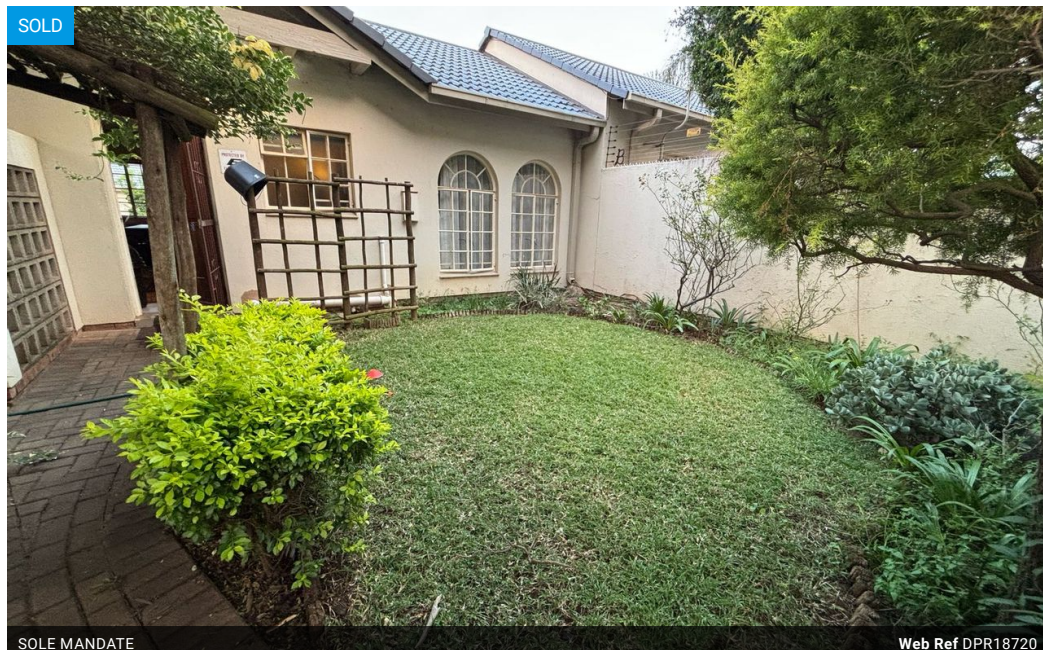


Welma Deysel
082 540 6828
welmadeysel@dpg.co.za

Contact Pretoria Moot

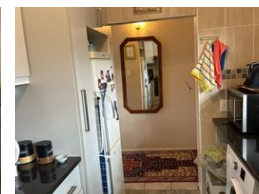
012 3323677

1170 Moulton Ave
Waverley
Pretoria
0186



SOLE MANDATE

Web Ref DPR18720



R1,100,000

2 1

Monthly Bond Repayment R11,167.52

Calculated over 20 years at 10.75% with no deposit.

Transfer Costs R32,749.00 **Bond Costs** R25,220.00

These calculations are only a guide. Please ask your conveyancer for exact calculations.

Monthly Levy R1,877 **Monthly Rates** R488

Neat, Spacious & Modern 2-Bedroom Townhouse in Garsfontein

****Exclusive Mandate to Dormehl Property Group****

Ideal for Young Professionals & Families!

Welcome to this beautifully upgraded 2-bedroom townhouse, perfectly designed for comfortable and modern living. Whether you're a young professional or a small family, this home offers the ideal balance of style, space, and convenience.

Step inside and be greeted by a bright and airy open-plan living area that flows seamlessly into a contemporary kitchen, making it easy to cook, entertain, and relax. doors open onto a generously sized patio, perfect for morning coffee or evening gatherings.

The two well-sized bedrooms provide ample cupboard space, while the full bathroom features sleek, modern finishes. The home has been thoughtfully updated to enhance both aesthetics and functionality.

Outside, you'll find a private front and back...

Features

Pets Allowed	Yes		
Interior		Exterior	
Bedrooms	2	Carports / Parkings	2
Bathrooms	1	Security	Yes
Kitchens	1	Pool	No
Recep. Rooms	2	Views	False
Furnished	No		
		Sizes	
		Floor Size	74m²

