

# 1 Bedroom Apartment For Sale in Hatfield



**Maryke de Beer**  
Principal Property Practitioner  
Registered with PPRA (FFC 097 612 5)  
083 353 5912  
marykedebeer@dpg.co.za

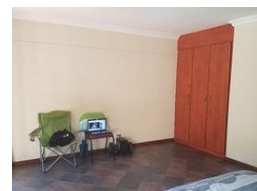
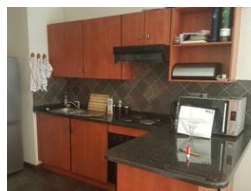
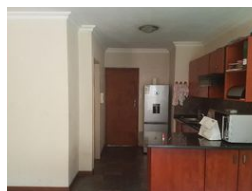
Contact Pretoria Moot

012 3323677

1170 Moulton Ave  
Waverley  
Pretoria  
0186



Web Ref DPG2761459



R650,000

1 1

**Monthly Bond Repayment** R6,489.47

Calculated over 20 years at 10.5% with no deposit.

**Transfer Costs** R23,709.00 **Bond Costs** R17,680.00

These calculations are only a guide. Please ask your conveyancer for exact calculations.

**Monthly Levy** R1,500

## 1 Bedroom flat for sale

Beautifully modern ground floor unit with large patio walking out onto green garden. Situated in a quiet street of Hatfield.

Access controlled with safe parking. Walking distance to all amenities including university campus.

Open plan kitchen with dining nook. Prepaid electricity.

## Features

Interior		Exterior		Sizes	
Bedrooms	1	Carports / Parkings	1	Floor Size	39m <sup>2</sup>
Bathrooms	1	Security	Yes		
Kitchens	1	Pool	No		
Recep. Rooms	1	Views	False		
Furnished	No				



<https://www.dpgprop.co.za>