



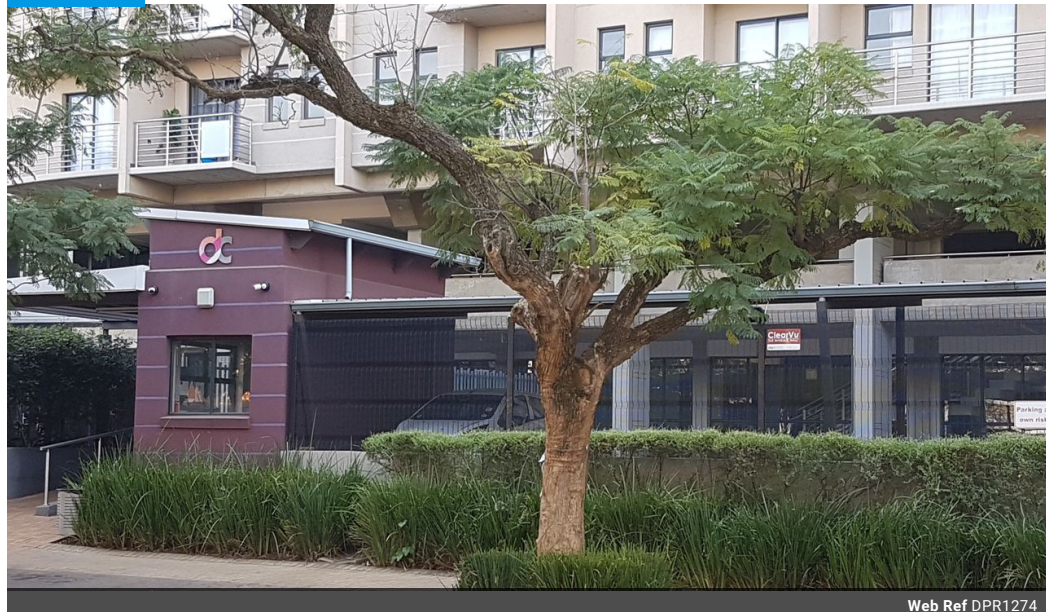
Maryke de Beer
Principal Property Practitioner
Registered with PPRA
(FFC 097 612 5)
083 353 5912
marykedebeer@dpg.co.za

Contact Pretoria Moot

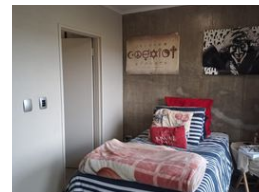
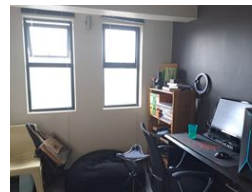
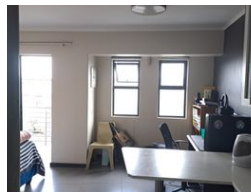
012 3323677

1170 Moulton Ave
Waverley
Pretoria
0186

UNDER OFFER



Web Ref DPR1274



R710,000

1 1

Monthly Bond Repayment R7,208.13

Calculated over 20 years at 10.75% with no deposit.

Transfer Costs R25,898.00 **Bond Costs** R19,565.00

These calculations are only a guide. Please ask your conveyancer for exact calculations.

Monthly Levy R900 **Monthly Rates** R400

Desirable Location

Modern studio unit situated in well maintained block and on a patrolled route to campus. Top notch security. 24 hours security with CCTV system, bio-metrics access controlled. Safe basement parking.

Fibre ready. Pre paid electricity and metered water.

Restaurant and laundry on site. Low levies and tenant in place for 2023.

Features

Interior

Bedrooms	1
Bathrooms	1
Kitchens	1
Recep. Rooms	2
Furnished	No

Exterior

Carports / Parkings	1
Security	Yes
Pool	No
Views	False

Sizes

Floor Size	30m ²
Land Size	30m ²