



Maryke de Beer
Principal Property Practitioner
Registered with PPRA
(FFC 097 612 5)
083 353 5912
marykedebeer@dpg.co.za

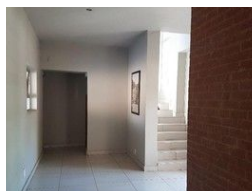
Contact Pretoria Moot

012 3323677

1170 Moulton Ave
Waverley
Pretoria
0186



Web Ref DPR13394



R630,000

🛏 1 🚿 1

Monthly Bond Repayment R6,395.94

Calculated over 20 years at 10.75% with no deposit.

Transfer Costs R23,730.00 **Bond Costs** R17,680.00

These calculations are only a guide. Please ask your conveyancer for exact calculations.

Monthly Levy R2,400 **Monthly Rates** R400

1 Bedroom flat for sale

Beautiful and modern studio for sale conveniently located walking distance from the university campus. No loadshedding, with water and WIFI included. Access controlled with safe off street parking.

Unit offers ample natural light, is plumbed for a washing machine and includes an air conditioner. Green views from the balcony.

Small well maintained block. Excellent rental potential, perfect for the 1st time investor, serious student or young professional.

Features

Interior

Bedrooms	1
Bathrooms	1
Kitchens	1
Furnished	No

Exterior

Carports / Parkings	1
Security	Yes
Pool	No
Views	True

Sizes

Floor Size	26m²
Land Size	26m²

