



**Maryke de Beer**  
Principal Property Practitioner  
Registered with PPRA  
(FFC 097 612 5)  
083 353 5912  
marykedebeer@dpg.co.za

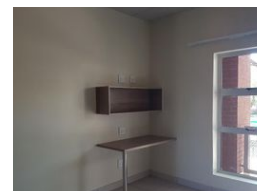
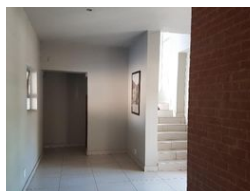
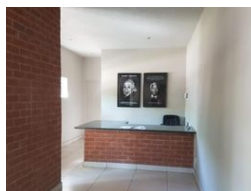
Contact Pretoria Moot

012 3323677

1170 Moulton Ave  
Waverley  
Pretoria  
0186



Web Ref DMMD-0215



**R598,000**

1 1

**Monthly Bond Repayment** R6,071.07  
Calculated over 20 years at 10.75% with no deposit.

**Transfer Costs** R21,217.00 **Bond Costs** R15,795.00  
These calculations are only a guide. Please ask your conveyancer for exact calculations.

**Monthly Levy** R1,500 **Monthly Rates** R400

## Bachelor flat for sale in Hatfield

Brand new, modern bachelor flat conveniently located close to campus and all amenities. Spacious living area, ample cupboards, beautiful modern kitchen and safe off street undercover parking. Well kept grounds. Smaller development creates more peaceful environment. Access controlled.

## Features

### Interior

Bedrooms	1
Bathrooms	1
Furnished	No

### Exterior

Carports / Parkings	1
Security	Yes
Pool	No
Views	No

### Sizes

Floor Size	26m²
Land Size	26m²