



Maryke de Beer
Principal Property Practitioner
Registered with PPRA
(FFC 097 612 5)
083 353 5912
marykedebeer@dpg.co.za

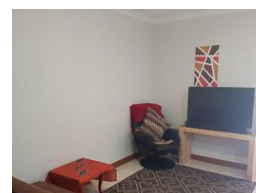
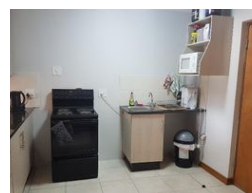
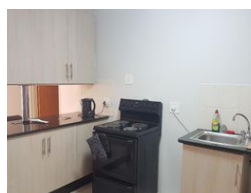
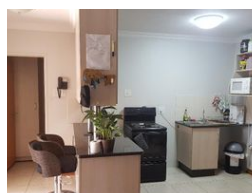
Contact Pretoria Moot

012 3323677

1170 Moulton Ave
Waverley
Pretoria
0186



Web Ref DPG2763743



R1,100,000

2 Bedrooms 1 Bathrooms

Monthly Bond Repayment R11,167.52

Calculated over 20 years at 10.75% with no deposit.

Transfer Costs R32,749.00 **Bond Costs** R25,220.00

These calculations are only a guide. Please ask your conveyancer for exact calculations.

Monthly Levy R1,800

2 Bedroom Flat For Sale

Spacious flat situated only 900 meters and a quick walk from the main campus of the university of Pretoria.

Centrally located to all amenities in a very popular area. Excellent rental opportunity. Access controlled with 24 hour security and safe basement parking.

Modern finishes. Double rooms with ample cupboard space, both with balconies.

Features

Interior

Bedrooms	2
Bathrooms	1
Kitchens	1
Recep. Rooms	0.5

Exterior

Carports / Parkings	2
Security	Yes
Pool	No
Views	No

