


Owen Dormehl
082 654 0024
owendormehl@dpg.co.za



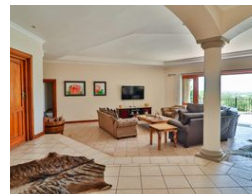
Riaan Bezuidenhout
079 527 3557
riaanbezuidenhout@dpg.co.za

Contact Pretoria Moot
012 3323677
1170 Moulton Ave
Waverley
Pretoria
0186

FEATURED



Web Ref DPR19187



R6,200,000

 4
  3
  2

Monthly Bond Repayment R62,944.20

Calculated over 20 years at 10.75% with no deposit.

Transfer Costs R545,766.00

Bond Costs R70,535.00

These calculations are only a guide. Please ask your conveyancer for exact calculations.

Monthly Levy R3,800

Monthly Rates R2,500

Sunset views, Style and Elegance, what more can you ask for?

Nestled within the prestigious and ecologically rich Leeuwfontein Estate, this beautifully appointed four-bedroom home offers the perfect blend of nature, comfort, and functionality for the modern family. Set against the backdrop of unspoiled bushveld and roaming wildlife, this property invites you to embrace a lifestyle of serene luxury just moments from the city.

Inside, the home boasts four generously sized bedrooms and three well-appointed bathrooms, including a convenient guest toilet. The kitchen is a culinary haven for the at-home chef, featuring ample cabinetry, dedicated spaces for all your appliances, and a thoughtful layout that makes everyday living effortless. The expansive open-plan lounge is ideal for entertaining, with room to host in style without sacrificing comfort.

A dedicated entertainment area, complete...

Features

Pets Allowed Yes

Interior

Bedrooms	4
Bathrooms	3
Kitchens	1
Recep. Rooms	4
Furnished	No

Exterior

Garages	2
Carports / Parkings	2
Security	No
Dom. Accom.	1
Pool	Yes
Views	False

Sizes

Land Size	10,000m²
-----------	----------

Extras

Workshop

