



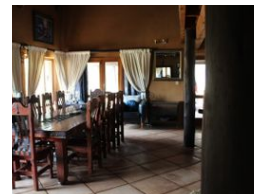
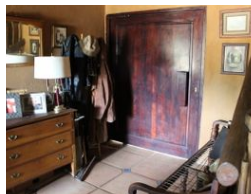
Owen Dormehl
082 654 0024
owendormehl@dpg.co.za

Contact Pretoria Moot
012 3323677
1170 Moulton Ave
Waverley
Pretoria
0186



SOLE MANDATE

Web Ref DPR21693



R3,445,000

Monthly Bond Repayment R34,394.19

Calculated over 20 years at 10.5% with no deposit.

Transfer Costs R215,805.00 **Bond Costs** R47,840.00

These calculations are only a guide. Please ask your conveyancer for exact calculations.

3 3

Modern Elegance & Entertainer's Dream in Leeuwfontein Estate

Set within the sought-after and secure Leeuwfontein Estate, this contemporary home blends stylish design with exceptional functionality—perfect for families who love to entertain while enjoying the tranquility of estate living.

The home offers three well-appointed bedrooms, each with built-in closets and its own private en-suite bathroom. Every bedroom flows seamlessly to a patio or balcony, allowing you to step out into fresh air and enjoy the natural beauty of the estate.

At the heart of the home lies a spacious open-plan living and dining area, designed for easy flow and everyday comfort. The modern kitchen, complete with scullery, caters for family living and entertaining with ease. A generous loft space upstairs provides the flexibility of a home office, additional lounge, or even a creative studio.

Outdoor living is...

Features

Interior

Bedrooms	3
Bathrooms	3
Kitchens	1
Recep. Rooms	3
Studies	1
Furnished	No

Exterior

Carports / Parkings	3
Security	No
Pool	Yes
Views	False

Sizes

Land Size	11,162m ²
-----------	----------------------

