



Owen Dormehl
082 654 0024
owendormehl@dpg.co.za



Riaan Bezuidenhout
079 527 3557

riaanbezuidenhout@dpg.co.za

Contact Pretoria Moot

012 3323677

1170 Moulton Ave
Waverley
Pretoria
0186

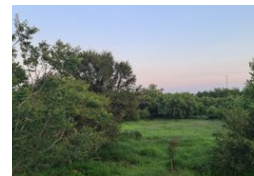
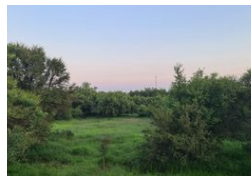
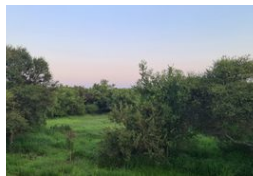
1Ha Vacant Land For Sale in Leeuwfontein Estate

FEATURED



SOLE MANDATE

Web Ref DPR17736



R910,000

Monthly Bond Repayment R9,238.58

Calculated over 20 years at 10.75% with no deposit.

Transfer Costs R30,412.00 **Bond Costs** R23,335.00

These calculations are only a guide. Please ask your conveyancer for exact calculations.

Monthly Levy R4,385 **Monthly Rates** R500

Unlock Your Dream Lifestyle at Leeuwfontein Estates

Tired of the same old neighborhood? Leeuwfontein Estates flips the script. Here's why:

Massive Stands, Wild Vibes

1 hectare of land, free-roaming small game, and nature walks on demand. Your backyard isn't just a yard—it's an experience.

Peace of Mind, Guaranteed

24/7 armed security. Let the kids run free. Walk in nature. Sleep like a baby. Safety is baked in.

Amenities That Deliver

Tennis courts? Check. Horse stables? Check. A killer Clubhouse with a pool, braai area, and space for private events? You bet.

Schools at Your Doorstep

Curro Private School is a 2 km drive—age 18 months to Grade 12. Kameelfontein Primary? Just 5 km further. Education? Handled.

Close to Everything You Need

11 km to the N1 and 15 km to The Colonnade and more. Want the Pretoria CBD? It's just 25 km.

This is the place for people who want more

Features