



Caroline De Beer
082 414 3963
carolinedebeer@dpg.co.za

Contact Head Office - Dormehl
Lite

012 0000000

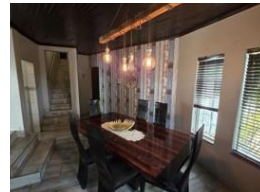
1170 Moulton Avenue
Waverley
0184

4 Bedroom House For Sale in Magalieskruin

NEW



Web Ref DPR20984



R2,450,000

4 Bedrooms 3 Bathrooms 2 Carports

Monthly Bond Repayment R24,460.31

Calculated over 20 years at 10.5% with no deposit.

Transfer Costs R111,861.00 **Bond Costs** R38,415.00

These calculations are only a guide. Please ask your conveyancer for exact calculations.

Monthly Levy R1 **Monthly Rates** R1,375 **Special Levy** R1

"Spacious Home with Flatlet, Pool & Jacuzzi"

Located in the sought-after suburb of Magalieskruin, this versatile home combines comfort, space, and entertainment features, all with convenient access to main roads, top schools, shopping malls, hospitals, and public transport.

Property Highlights:

4 bedrooms and 3 bathrooms (including flatlet)

Modern kitchen with granite countertops and separate scullery

Open-plan dining and family room for relaxed living and entertaining

Entertainment area with built-in braai and beautiful views

Balcony – perfect for morning coffee or sunset relaxation

Sparkling swimming pool, jacuzzi, and private garden for family fun

Flatlet – ideal for guests, extended family, or rental income

Features

Pets Allowed	Yes		
Interior		Exterior	
Bedrooms	4	Garages	2
Bathrooms	3	Carports / Parkings	2
Kitchens	1	Security	Yes
Recep. Rooms	2	Pool	No
Furnished	No	Views	False

