



Melisa Scheepers
067 069 6946
melisascheepers@dpg.co.za



Estean Bolleurs
067 069 6946

esteanbolleurs@dpg.co.za

Contact Pretoria Moot

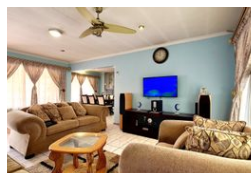
012 3323677

1170 Moulton Ave
Waverley
Pretoria
0186

FEATURED



Web Ref DPR18052



R1,950,000

3 2 3

Monthly Bond Repayment R19,796.96

Calculated over 20 years at 10.75% with no deposit.

Transfer Costs R72,206.00 **Bond Costs** R32,760.00

These calculations are only a guide. Please ask your conveyancer for exact calculations.

Monthly Rates R700

UNBEATABLE DEAL: 3-BED HOME + POOL + FLATLET + ENTERTAINMENT AREA – PRICED TO SELL FAST!

If you're looking for maximum value, security, and lifestyle all in one, this 230 sqm face brick beauty is it. Built to last, designed to impress, and packed with features that make this an absolute no-brainer for families, entertainers, or smart buyers who know a deal when they see one.

WHAT YOU'RE GETTING (FOR WAY LESS THAN IT SHOULD COST)

3 Bedrooms – Main bedroom has an ensuite for ultimate privacy.

2 Large Bathrooms – Full ensuite (shower, bath, basin, toilet) + second bathroom (bath, basin, toilet).

Chef-Worthy Kitchen – Modern, spacious, plus a big scullery to keep things clean and organized.

Entertainment-Ready Outdoor Setup – Pool + built-in braai + lush, family-friendly garden = weekend sorted.

Bonus Flatlet – Use it for guests, your office, a helper, or cash flow (rent it out!). Plus, an extra outside...

Features

Pets Allowed Yes

Interior

Bedrooms	3
Bathrooms	2
Kitchens	1
Recep. Rooms	2
Studies	1
Furnished	No

Extras

En Suite

Exterior

Garages	3
Security	Yes
Pool	Yes
Views	False

Sizes

Floor Size	230m ²
Land Size	675m ²