



Caroline De Beer
082 414 3963
carolinedebeer@dpg.co.za

Contact Head Office - Dormehl
Lite

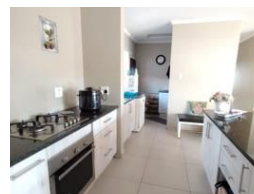
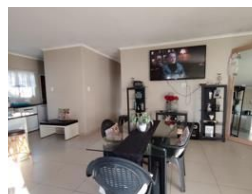
012 0000000

1170 Moulton Avenue
Waverley
0184

FEATURED



Web Ref DPR20502



R1,595,000

🛏 3 🚿 1.5 🚗 2

Monthly Bond Repayment R15,924.16

Calculated over 20 years at 10.5% with no deposit.

Transfer Costs R48,737.00 **Bond Costs** R28,990.00

These calculations are only a guide. Please ask your conveyancer for exact calculations.

Monthly Levy R1 **Monthly Rates** R1,350 **Special Levy** R1

Wanted: Young couple!!

Take the Landlord off your payroll! This home offers you warm cozy nights in front of the the crackling fireplace, 3 Well sized bedrooms, Lounge come Dining Room with 1.5 Bathroom. Kitchen with Granite tops, Gas stove and separate scullery. And it also gives leeway for an office to work from home. Then comes summer-time and you can enjoy sipping away on your cocktails next to the Pool. There is a double Garage and loads of parking. Built-in- Braai, and a Tool Shed and with a fibre connection. Don't delay come and view this property today.

Features

Pets Allowed	Yes				
Interior		Exterior		Sizes	
Bedrooms	3	Garages	2	Floor Size	1m²
Bathrooms	1.5	Carports / Parkings	1	Land Size	703m²
Kitchens	1	Security	No		
Recep. Rooms	2	Pool	Yes		
Furnished	No	Views	False		

