



Maryke de Beer
Principal Property Practitioner
Registered with PPRA (FFC 097 612 5)
083 353 5912
marykedebeer@dpg.co.za

Contact Pretoria Moot

012 3323677

1170 Moulton Ave
Waverley
Pretoria
0186

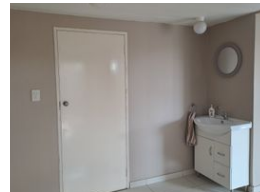
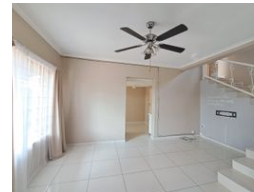
3 Bedroom Duet Sold in Moreleta Park

SOLD



SOLE MANDATE

Web Ref DPR19061



R1,700,000

3 2.5 2

Monthly Bond Repayment R17,258.89

Calculated over 20 years at 10.75% with no deposit.

Transfer Costs R55,039.00 **Bond Costs** R30,875.00

These calculations are only a guide. Please ask your conveyancer for exact calculations.

Monthly Rates R1,600

Priced to sell

Well located unit offering 2 double rooms downstairs with a shared full bathroom. Build in cupboards with laminated floors. Large main bedroom upstairs with walk in closet and en suite full bathroom.

Modern finished kitchen. Open plan dining and living room space with separate room that can be used as a second living space or study. Guest bathroom.

Double garage with additional parking space. Electric gate. Low maintenance facebrick.

Features

Pets Allowed		Yes			
Interior				Sizes	
Bedrooms	3			Floor Size	166m ²
Bathrooms	2.5			Land Size	665m ²
Kitchens	1				
Recep. Rooms	2				
Studies	1				
Furnished	No				
Exterior					
Garages	2				
Carports / Parkings	4				
Security	No				
Pool	No				
Views	False				

