

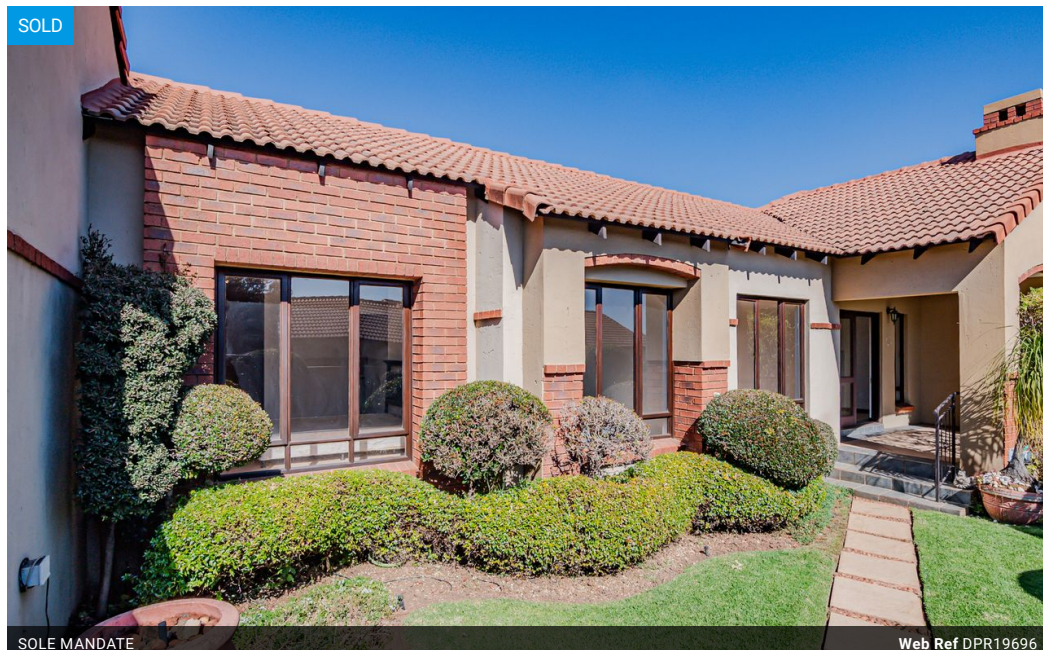


Welma Deysel
082 540 6828
welmadeysel@dpg.co.za

Contact Pretoria Moot

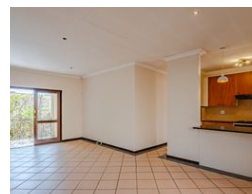
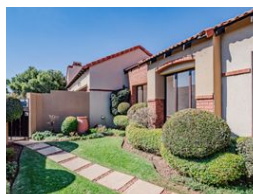
012 3323677

1170 Moulton Ave
Waverley
Pretoria
0186



SOLE MANDATE

Web Ref DPR19696



R1,825,000

3 2 2

Monthly Bond Repayment R18,527.93

Calculated over 20 years at 10.75% with no deposit.

Transfer Costs R64,706.00 **Bond Costs** R32,760.00

These calculations are only a guide. Please ask your conveyancer for exact calculations.

Monthly Levy R4,286 **Monthly Rates** R1,067.5

Modern, Low-Maintenance Living with Spacious Garden and Extras!

This beautifully presented 3-bedroom, 2-bathroom townhouse is the perfect blend of comfort, space, and convenience – ideal for families or professionals looking for secure estate living.

Property Features:

- 3 Bedrooms – Main bedroom with en-suite bathroom and walk-in closet
- 2 Full Bathrooms – Neatly finished with quality fittings
- Open-Plan Living Area – Lounge and dining room flow onto a covered patio with built-in braai – perfect for entertaining
- Modern Kitchen – Ample cupboard space, electric stove, and separate scullery
- Landscaped Front & Back Gardens – Well-maintained with automated irrigation system

Outbuildings & Extras:

- Double Garage – With motorised doors for secure parking
- Staff Quarters – Tiled room with its own shower and toilet
- Impact Metering Services – Manage utilities efficiently
- Back-up...

Features

Interior

Bedrooms	3
Bathrooms	2
Kitchens	1
Recep. Rooms	2
Furnished	No

Exterior

Garages	2
Carports / Parkings	2
Security	No
Dom. Accom.	1
Pool	No
Views	False

Sizes

Floor Size	166m ²
------------	-------------------

