



**Maryke de Beer**  
Principal Property Practitioner  
Registered with PPRA  
(FFC 097 612 5)  
083 353 5912  
marykedebeer@dpg.co.za

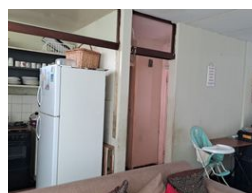
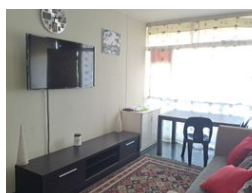
Contact Pretoria Moot

012 3323677

1170 Moulton Ave  
Waverley  
Pretoria  
0186



Web Ref DPR5391



**R360,000**

1 Bed 1 Bath 1 Garage

**Monthly Bond Repayment** R3,654.82

Calculated over 20 years at 10.75% with no deposit.

**Transfer Costs** R16,806.00 **Bond Costs** R11,960.00

These calculations are only a guide. Please ask your conveyancer for exact calculations.

**Monthly Levy** R1,480 **Monthly Rates** R400

1 Bedroom flat for sale

Excellent rental generator! Situated in a no load shedding area. Large unit with a spacious bedroom, living and dining room area.

Well maintained block. Walking distance to town and surrounding areas. Low levies and rates.

Communal gardens and open space.

## Features

### Interior

Bedrooms	1
Bathrooms	1
Kitchens	1
Recep. Rooms	2
Furnished	No

### Exterior

Garages	1
Security	Yes
Pool	No
Views	True

### Sizes

Floor Size	58m <sup>2</sup>
Land Size	58m <sup>2</sup>