



Owen Dormehl
082 654 0024
owendormehl@dpg.co.za



Barbara Lourens
082 8877 259
barbaral@dpg.co.za

Contact Pretoria Moot

012 3323677

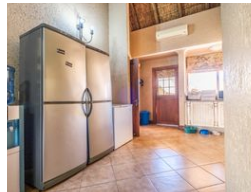
1170 Moulton Ave
Waverley
Pretoria
0186

FEATURED



SOLE MANDATE

Web Ref DPR16434



R6,895,000

Monthly Bond Repayment R68,838.29

Calculated over 20 years at 10.5% with no deposit.

Transfer Costs R622,420.00 **Bond Costs** R70,535.00

These calculations are only a guide. Please ask your conveyancer for exact calculations.

Monthly Levy R3,000 **Monthly Rates** R28

4 4 4

Exquisite One and a half Hectare Estate with Luxurious Living Spaces and Garden Retreat

This remarkable one and a half hectare property features a grand 1160 sqm residence, complete with a private flatlet, offering an unparalleled lifestyle of space, luxury, and tranquility. Every detail of this home has been thoughtfully designed for comfort and sophistication, with four lavish bedrooms, each boasting full en-suite bathrooms. The primary suite is a sanctuary unto itself, featuring a cozy living area, a fireplace, and his-and-hers bathrooms with dressing rooms. The second bedroom offers its own living room and kitchenette, while the third and fourth bedrooms are complemented by a separate kitchen and living area, ideal for independent living or guest accommodation.

Entertain effortlessly with a bar and entertainment area filled with custom cabinetry and sliding doors opening to the sprawling garden and covered...

Features

Pets Allowed Yes

Interior

Bedrooms	4
Bathrooms	4
Kitchens	4
Recep. Rooms	7
Studies	1
Furnished	No

Exterior

Garages	4
Carports / Parkings	10
Security	Yes
Dom. Accom.	1
Pool	Yes
Views	True

Sizes

Floor Size	1,160m²
Land Size	1Ha

