



Caroline De Beer
082 414 3963
carolinedebeer@dpg.co.za

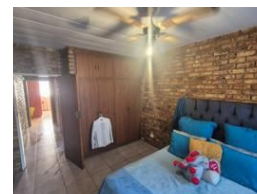
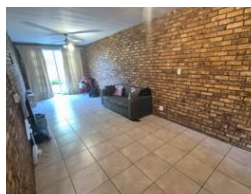
Contact Head Office - Dormehl
Lite

012 0000000

1170 Moulton Avenue
Waverley
0184



Web Ref DPR21455



R520,000

2 1

Monthly Bond Repayment R5,191.58

Calculated over 20 years at 10.5% with no deposit.

Transfer Costs R21,273.00 **Bond Costs** R15,795.00

These calculations are only a guide. Please ask your conveyancer for exact calculations.

Monthly Levy R1,300 **Monthly Rates** R350 **Sectional Title Levy** R1
Special Levy R1

Neat 2-Bedroom Ground Floor Flat in a Popular Pretoria North Location

SOLE AND EXCLUSIVE MLS MANDATE

This well-kept ground floor flat is the perfect opportunity for first-time buyers, investors, or those looking to scale down. Ideally situated in a sought-after area of Pretoria North, the property offers convenience with schools, shops, and essential services just minutes away.

The unit features two comfortable bedrooms, a full bathroom, a welcoming lounge, and a practical kitchen. A dedicated parking bay is included for your convenience. Fibre internet is available, ensuring modern connectivity, and the flat enjoys the added benefit of being on the ground floor.

Neat, low-maintenance, and well-located, this property is ready to welcome its new owner. Contact me today to arrange a private viewing of this prime opportunity!

Features

Interior

Bedrooms	2
Bathrooms	1
Kitchens	1
Recep. Rooms	1
Furnished	No

Exterior

Carports / Parkings	1
Security	No
Pool	No
Views	False

Sizes

Floor Size	80m ²
Land Size	2,551m ²

