



Caroline De Beer
082 414 3963
carolinedebeer@dpg.co.za

Contact Head Office - Dormehl
Lite

012 0000000

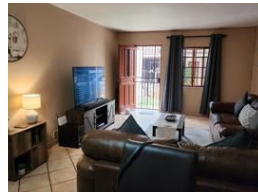
1170 Moulton Avenue
Waverley
0184

3 Bedroom Duplex For Sale in Pretoria North

NEW



Web Ref DPR21423



R899,000

3 Bedrooms 1 Bathroom 1 Garage

Monthly Bond Repayment R8,975.44

Calculated over 20 years at 10.5% with no deposit.

Transfer Costs R28,334.00 **Bond Costs** R21,450.00

These calculations are only a guide. Please ask your conveyancer for exact calculations.

Monthly Levy R2,013 **Monthly Rates** R407 **Sectional Title Levy** R1
Special Levy R1

Modern Duplex Living at Its Best

3 Spacious Bedrooms, 1 Neat Bathroom. Ready to just move in!

Tiled throughout – very neat & low maintenance

Kitchen & Living

Dream kitchen with plenty of cupboards & stylish tops. Space for washing machine.

Spacious lounge & dining area. Direct access from garage into the lounge

Entertainment & Extras

Lovely braai/entertainment area

Pet-friendly unit

Includes blinds, DStv dish, 2x aircons & 3 ceiling fans

Fibre (Wi-Fi) through Metro

Security

Security gates in passage & at outside doors

CCTV cameras installed for added safety

Location

Features

Pets Allowed Yes

Interior

Bedrooms	3
Bathrooms	1
Kitchens	1
Recep. Rooms	2
Furnished	No

Exterior

Garages	1
Carports / Parkings	1
Security	Yes
Pool	No
Views	False

Sizes

Floor Size	99m²
Land Size	2,551m²

