



**Wian Venter**  
Candidate Property Practitioner  
Registered with PPRA  
(FFC 124 955 4)  
082 054 2909  
wianventer@dpg.co.za

Contact Pretoria Moot

012 3323677

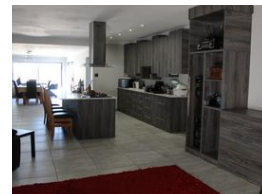
1170 Moulton Ave  
Waverley  
Pretoria  
0186

## FEATURED



SOLE MANDATE

Web Ref DPR4322



## R2,400,000

🛏 6 🚿 3.5 🚗 5

**Monthly Bond Repayment** R24,772.52

Calculated over 20 years at 11% with no deposit.

**Transfer Costs** R105,552.00 **Bond Costs** R36,530.00

These calculations are only a guide. Please ask your conveyancer for exact calculations.

**Monthly Rates** R1,614

This magnificent (Cape Dutch-style) house that has a modern twist to it.

It is situated safely on top of Silverton Ridge. With a 180-degree breathtaking view that stretches far and wide. This house is any entertainers dream with an open plan from the living, dining, and entertainment area.

The luxurious main house (315 squares) consist of the following:

3 bedrooms, 2 full bathroom:

- The main bedroom has an en-suite full bathroom with a large walk-in closet, a built-in vanity, and a kitchenette with a fireplace.
- The 2 bedrooms have an interleading door.
- All 3 bedrooms having their own ceiling fans.
- Large study divided into two sections.
- Linen closet.
- Large open plan living room that connects the kitchen and bar area.

## Features

**Pets Allowed** Yes

### Interior

Bedrooms	6
Bathrooms	3.5
Kitchens	2
Recep. Rooms	3
Studies	1
Furnished	No

### Exterior

Garages	5
Carports / Parkings	1
Security	Yes
Pool	No
Views	True

### Sizes

Floor Size	518m <sup>2</sup>
Land Size	1,081m <sup>2</sup>

