



Duan Janse van Rensburg
Non-Principal Property Practitioner
Registered with PPRA
(FFC 121 813 1)

084 919 4458
duanjvr@dpg.co.za



Owen Dormehl
082 654 0024

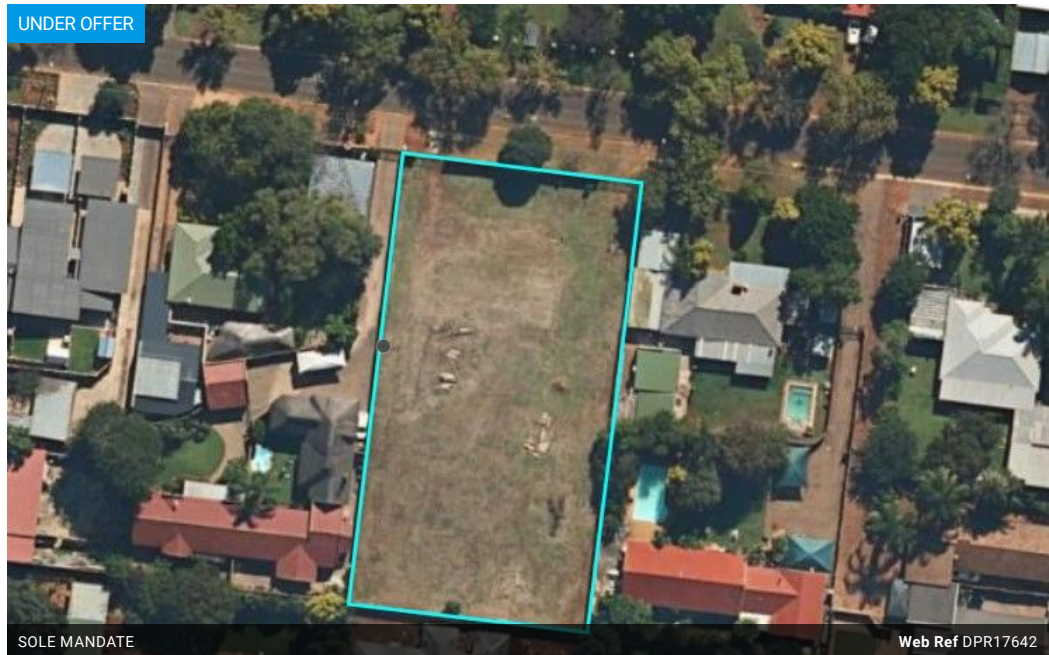
owendormehl@dpg.co.za

Contact Pretoria Moot

012 3323677

1170 Moulton Ave
Waverley
Pretoria
0186

UNDER OFFER



R2,595,000

Monthly Bond Repayment R26,345.19

Calculated over 20 years at 10.75% with no deposit.

Transfer Costs R123,320.00 **Bond Costs** R38,415.00

These calculations are only a guide. Please ask your conveyancer for exact calculations.

Prime Vacant Land in Waverley, Pretoria – Endless Potential

Discover an exceptional investment opportunity in the sought-after suburb of Waverley, Pretoria. This 2,552 square meter property offers the perfect canvas to bring your vision to life, whether for residential development or personal use.

Key Features:

- Size: Generous 2,552 square meters of level, usable space.
- Zoning Potential: Currently zoned as vacant land but holds the potential for rezoning to accommodate up to 6 sectional title units – ideal for developers or investors.
- Security: Fully fenced, providing safety and privacy.
- Prime Location: Nestled in a tranquil neighborhood with easy access to major routes, schools, shopping centers, and amenities.

This is a rare find in a well-established area with strong demand for sectional title units and residential properties. Whether you're looking to develop or build your...

Features

