



Caroline De Beer
082 414 3963
carolinedebeer@dpg.co.za

Contact Head Office - Dormehl
Lite

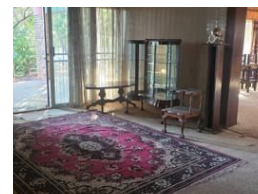
012 0000000

1170 Moulton Avenue
Waverley
0184

SOLD



Web Ref DPR20603



R1,795,000

4 Bedrooms 2 Bathrooms 3 Garages

Monthly Bond Repayment R18,223.36

Calculated over 20 years at 10.75% with no deposit.

Transfer Costs R60,739.00 **Bond Costs** R30,875.00

These calculations are only a guide. Please ask your conveyancer for exact calculations.

Monthly Levy R1 **Monthly Rates** R966 **Special Levy** R1

🏠 Ideal Fixer-Upper in Wonderboom

Spacious Family Home with Loads of Potential!

Looking for a home you can transform into your dream space? This generously sized 4-bedroom family home in Wonderboom, Northern Pretoria, is packed with potential and just needs a little TLC to shine.

🏠 Property Features:

4 Spacious Bedrooms – all with built-in cupboards and carpeted floors

2 Bathrooms – full bathrooms with bath, shower, basin, and toilet

3 Living Areas – lounge, dining room, and TV/family room

Kitchen – functional layout, ready for your personal touch

3 Garages + Carports – ample space for secure vehicle parking

Swimming Pool – needs attention but offers great potential

Large Stand: 1,283 m²

Features

Pets Allowed Yes

Interior

Bedrooms	4
Bathrooms	2
Kitchens	1
Recep. Rooms	3
Furnished	No

Exterior

Garages	3
Carports / Parkings	1
Security	No
Pool	Yes
Views	False

Sizes

Floor Size	1m²
Land Size	1,283m²

