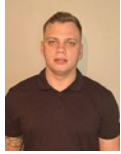




**Dale Hayne**  
071 952 2762  
dale.hayne@dpg.co.za



**Rowan Pidermann**  
083 733 3874  
rowanpidermann@dpg.co.za



**Andile Ndimande**  
066 100 4481  
andilendimande@dpg.co.za

Contact Queensburgh

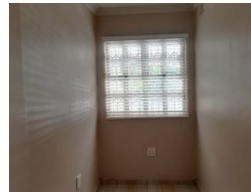
031 4632533

Shop 2, 120 Stella Road  
Hillary  
Durban  
4094

## 3 Bedroom Duplex For Sale in Malvern



Web Ref DPR19368



**R1,495,000**

3 Bedrooms 1.5 Bathrooms 1 Garage

**Monthly Bond Repayment** R15,431.22

Calculated over 20 years at 11% with no deposit.

**Transfer Costs** R45,635.00 **Bond Costs** R28,990.00

These calculations are only a guide. Please ask your conveyancer for exact calculations.

**Monthly Levy** R2,729.6 **Monthly Rates** R1,100

### BEAUTIFUL 3 BEDROOM TOWNHOUSE FOR SALE IN MEMORIAL PARK

This modern 3-bedroom duplex is situated in the heart of Malvern, Queensburgh, Durban, offering both comfort and convenience for families or professionals. The home features spacious bedrooms, a well-designed kitchen, and an open-plan living and dining area that leads to a private garden. Residents can enjoy access to a well-maintained common pool, perfect for relaxation and entertainment. The property is ideally located close to a range of reputable schools, shopping centres, and essential amenities, making daily life hassle-free. With its prime location and family-friendly features, this duplex offers a fantastic lifestyle opportunity in a sought-after neighborhood.

- Common Pool
- 3 Good-sized bedrooms (MES)
- Built-in cupboards
- Tiled throughout
- Wheelchair friendly
- Visitor Parking
- Tiled throughout
- Single...

### Features

#### Interior

|              |     |
|--------------|-----|
| Bedrooms     | 3   |
| Bathrooms    | 1.5 |
| Kitchens     | 1   |
| Recep. Rooms | 1   |
| Furnished    | No  |

#### Exterior

|                     |       |
|---------------------|-------|
| Garages             | 1     |
| Carports / Parkings | 1     |
| Security            | No    |
| Pool                | Yes   |
| Views               | False |

#### Sizes

|            |                      |
|------------|----------------------|
| Floor Size | 121m <sup>2</sup>    |
| Land Size  | 14,942m <sup>2</sup> |

#### Extras

Air Conditioner Above Road Bath, Toilet and Basin Built in Wardrobes Residential Single Parking Tiled Floors Driveway Townhouse Wheelchair Accessible Open Plan Kitchen Electric Gate Garden Immaculate Condition

