



Carlene Smith
Candidate Property Practitioner
Registered with PPRA
(FFC 122 637 5)
0782079921
carlenesmith@dpg.co.za



Shireen Purmasur
Candidate Property Practitioner
Registered with PPRA
(FFC 098 656 1)
083 601 3680
shireen@dpg.co.za



Andile Ndimande
066 100 4481

andilendimande@dpg.co.za

Contact Queensburgh

031 4632533

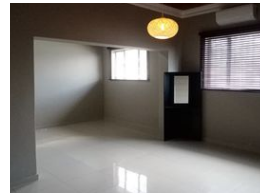
Shop 2, 120 Stella Road
Hillary
Durban
4094

3 Bedroom Freestanding For Sale in Malvern

NEW



Web Ref DPR21009



R2,350,000

3 Bedrooms 2 Bathrooms 2 Carports

Monthly Bond Repayment R23,461.93

Calculated over 20 years at 10.5% with no deposit.

Transfer Costs R101,693.00 **Bond Costs** R36,530.00

These calculations are only a guide. Please ask your conveyancer for exact calculations.

Monthly Rates R1,684.9

STUNNING 3 BEDROOM HOUSE IN MALVERN

Exquisite Tranquility in Malvern, Queensburgh: A Paradisiacal Haven

Step into a world of refined elegance, nestled in the serene suburb of Malvern in Queensburgh, where this luxurious residence epitomizes sophistication and comfort. This exquisite 3-bedroom home awaits those who desire a harmonious blend of modern luxury and peaceful suburban living.

Malvern, a sought-after enclave in the heart of Queensburgh, offers residents an idyllic lifestyle characterized by lush greenery, welcoming communities, and convenient city access. Known for its vibrant mix of culture and tranquility, Queensburgh is a hidden gem providing the perfect backdrop for a family home or a luxurious retreat.

Upon entering this elegant abode, be mesmerized by the expansive interiors, enriched with aluminium windows that elegantly frame the lush garden...

Features

Pets Allowed Yes

Interior

Bedrooms	3
Bathrooms	2
Kitchens	1
Recep. Rooms	4
Furnished	No

Exterior

Garages	2
Carports / Parkings	3
Security	No
Pool	Yes
Views	False

Sizes

Floor Size	251m ²
Land Size	997m ²

Extras

Built in Wardrobes Residential Carport Tiled Floors Driveway Above Road Air Conditioner
Modern Mainen Suite Shower, Toilet and Basin Freestanding Totally Walled Aluminium Window

