



**Caroline De Beer**  
082 414 3963  
carolinedebeer@dpg.co.za

Contact Head Office - Dormehl  
Lite

012 0000000

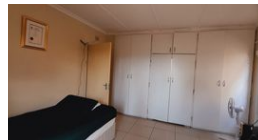
1170 Moulton Avenue  
Waverley  
0184

## 7 Bedroom Freestanding For Sale in Northdene

### FEATURED



Web Ref DPR14829



**R2,650,000**

7 5

**Monthly Bond Repayment** R26,903.57

Calculated over 20 years at 10.75% with no deposit.

**Transfer Costs** R129,887.00 **Bond Costs** R40,300.00

These calculations are only a guide. Please ask your conveyancer for exact calculations.

**Monthly Levy** R1 **Monthly Rates** R1,538 **Special Levy** R2

**PRICED DROPPED FOR A QUICK SALE!!!! Calling Property Investors!!**

This is a income generating opportunity. You get three in one! Just a reminder that this has to be sold as a going concern. There are 3 leases in place, and they are very good tenants. Main house is living there since 2016. It Offers the main house, plus 2 separate flatlets.

It comprises of the following:

Main House: Lounge, Dining Room, Kitchen, 3 Bedrooms, 2 Bathrooms, One MES. Covered Carport for 2 Cars. Main house and flat no 1 share the same entrance. Security gates and Burglar Guards.

Flat No. 1: Lounge Open Plan to Dining room and Kitchen. Lounge area is Tiled with Hob + Fan and UCO. 1.5 Bedrooms are Tiled with BIC and the smaller room has own entrance. 1 Bathroom, Shower, Basin and Toilet. Plus, 2 Open Parking. Burglar Guards and Security Gates.

Flat no 2: Lounge, Open Plan to Kitchen and Dining Room area,...

### Features

<b>Pets Allowed</b>	Yes		
<b>Interior</b>		<b>Exterior</b>	
Bedrooms	7	Carports / Parkings	7
Bathrooms	5	Security	No
Kitchens	3	Pool	No
Recep. Rooms	6	Views	False
Furnished	No		
<b>Extras</b>			
Above Road			
		<b>Sizes</b>	
		Floor Size	350m <sup>2</sup>
		Land Size	1,137m <sup>2</sup>

