



## Martin Van Deventer

Candidate Property Practitioner  
Registered with PPRA  
(FFC 123 445 6)  
078 263 0813  
martinvd@dpg.co.za

Contact Pretoria Moot

012 3323677

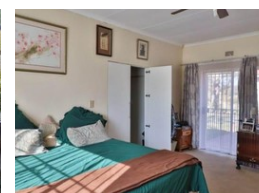
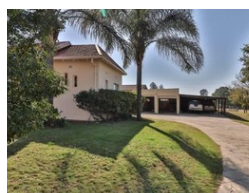
1170 Moulton Ave  
Waverley  
Pretoria  
0186

## FEATURED



SOLE MANDATE

Web Ref DPG2751963



# R3,499,999

4 2.5

**Monthly Bond Repayment** R35,533.00

Calculated over 20 years at 10.75% with no deposit.

**Transfer Costs** R221,713.89 **Bond Costs** R47,840.00

These calculations are only a guide. Please ask your conveyancer for exact calculations.

## Stunning family home for sale with plenty of space

This lovely family home is situated in the ever-popular Lanseria area. The property is perfect for those who desire space and freedom, with 2.1 hectares of land there is plenty of space to go around.

The property features 4 bedrooms, 2.5 bathrooms and 2 living areas. A spacious kitchen is the heart of the home, with granite countertops and spacious enough for a small dining room set. The two living areas are great for the entertainer.

The property also has a double carport, 2 garages and a spacious flatlet.

Do not miss out on this deal!

## Features

### Interior

Bedrooms	4
Bathrooms	2.5
Kitchens	1
Recep. Rooms	1
Studies	1
Furnished	No

### Exterior

Carports / Parkings	1
Security	No
Pool	No
Views	False

### Sizes

Land Size	21,000m²
-----------	----------

