



**Sue Speechly**  
082 444 0001  
suespeechly@dpg.co.za

Contact Westville

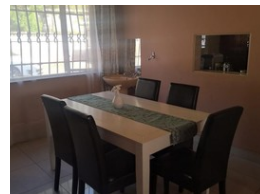
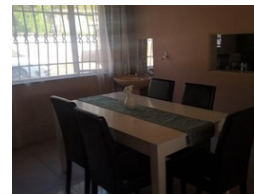
031 2669091

Shop 1, Gordana Court,  
22/26 Salisbury Avenue,  
Westville

SOLD



Web Ref DRL2748298



**R985,000**

4 2 2

**Monthly Bond Repayment** R9,834.04

Calculated over 20 years at 10.5% with no deposit.

**Transfer Costs** R30,502.00 **Bond Costs** R23,335.00

These calculations are only a guide. Please ask your conveyancer for exact calculations.

## IMMACULATE HOME WITH GENERATING INCOME

This immaculate house is tiled throughout with italian tiles. The spacious kitchen includes a built in oven, extractor fan and ample cupboard space. All the bedrooms in this home comes with burglar bars in the windows and BIC's. One of the two bathrooms consists of a shower and bathtub in the other.

Cherry on top, there is two separate income generating flatlets on this property. Bonus double garage.

## Features

### Interior

Bedrooms	4
Bathrooms	2
Kitchens	1
Recep. Rooms	2
Furnished	No

### Exterior

Garages	2
Security	Yes
Pool	No
Views	Yes

### Sizes

Land Size	5,033m²
-----------	---------