



Kyle De Aguiar

Candidate Property Practitioner
Registered with PPRA
(FFC 118 969 8)
072 137 4699
kyled@dpg.co.za



Wesley Selley

072 996 4488
wesleyselley@dpg.co.za

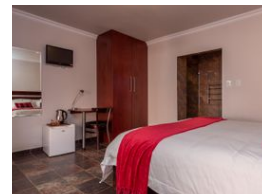
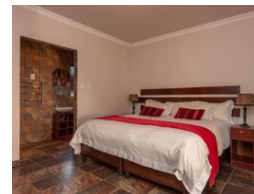
Contact DPG Alberton/JHB South

011 5539200

95 Victoria Street,
Oakdene,
Johannesburg,
Gauteng,
2190



Web Ref DPG2762704



R3,500,000

13 Bedrooms 15 Bathrooms 5 Carports / Parkings

Monthly Bond Repayment R35,533.01

Calculated over 20 years at 10.75% with no deposit.

Transfer Costs R221,714.00 **Bond Costs** R47,840.00

These calculations are only a guide. Please ask your conveyancer for exact calculations.

Monthly Rates R1,457

Prime Investment Opportunity as a Guesthouse or Student Accommodation.

With its grandstand location, the Pekwa Lodge was run as a Family Guesthouse for over 5 years. The property is nestled in one of Roodekrans' most sought after Streets providing a unobstructed elevated views of the valley it lies in. With a number of facilities on hand as well as the stunning views, guests are able to wholeheartedly embrace the serenity that encompasses them. The Pekwa Lodge sets itself apart as focal point in relation to quality and scale. The grandiose location and what the property offers being centrally located within the Suburb, it has a strong foundation for a new found guesthouse or student accommodation in the making.

Details of the Property:

- Stand Size: 2165sqm
- Under Road: +700sqm
- Double Storey Home

Details of the Main House:

- Reception Area on Entrance
- 13 Bedrooms - All Guest...

Features

Interior

| | |
|--------------|-----|
| Bedrooms | 13 |
| Bathrooms | 15 |
| Kitchens | 1 |
| Recep. Rooms | 3 |
| Studies | 2 |
| Furnished | Yes |

Exterior

| | |
|---------------------|-------|
| Garages | 5 |
| Carports / Parkings | 10 |
| Security | No |
| Dom. Accom. | 2 |
| Pool | Yes |
| Views | False |

Sizes

| | |
|------------|---------------------|
| Floor Size | 700m ² |
| Land Size | 2,165m ² |

