

Celia Kotze
083 442 8016
celiakotze@dpg.co.za

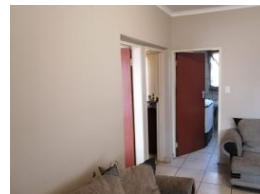
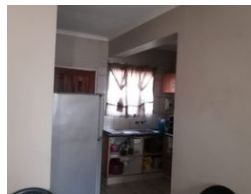
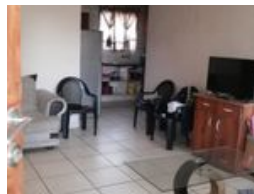
Contact Rustenburg

014 5942402

Mystic Blue Office Park
220 Beyers Naude Drive
Rustenburg
0229



Web Ref DPR14604



R540,000

2 1

Monthly Bond Repayment R5,482.24

Calculated over 20 years at 10.75% with no deposit.

Transfer Costs R21,217.00 **Bond Costs** R15,795.00

These calculations are only a guide. Please ask your conveyancer for exact calculations.

Monthly Levy R920 **Monthly Rates** R1,300

An endearing 2 bedroom Apartment in Mid-Town

An endearing 2 bedroom apartment awaits an owner to take delight in. This peaceful, gated cluster of homes is situated close to schools, shops and taxi ranks. It consists of a spacious living area and the bedrooms give enough space to fit your beds of all sizes. Safe carport parking space available.

Features

Interior

Bedrooms	2
Bathrooms	1
Kitchens	1
Recep. Rooms	1
Furnished	No

Exterior

Carports / Parkings	1
Security	Yes
Pool	No
Views	False

