



**Lisa Vermaak**  
0662157674  
lisavermaak@dpg.co.za



**Celia Kotze**  
083 442 8016  
celiakotze@dpg.co.za

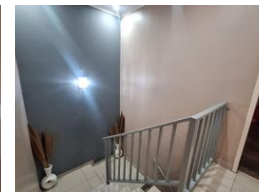
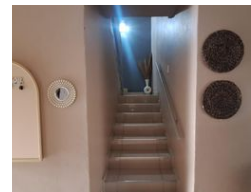
Contact Rustenburg

014 5942402

Mystic Blue Office Park  
220 Beyers Naude Drive  
Rustenburg  
0229



Web Ref DPR19573



**R969,999**

3 2 1

**Monthly Bond Repayment** R10,012.22  
Calculated over 20 years at 11% with no deposit.

**Transfer Costs** R30,412.00 **Bond Costs** R23,335.00

These calculations are only a guide. Please ask your conveyancer for exact calculations.

**Monthly Levy** R1,400 **Monthly Rates** R1,500

## !Modern Duplex for Sale Near Mountain View Square – Pet Friendly!

Welcome to this charming and spacious duplex, ideally situated in a sought-after complex near Mountain View Square. Perfect for families or first-time buyers, this home offers both comfort and convenience.

Downstairs, you'll find a well-designed open-plan kitchen and living area that flows seamlessly, ideal for entertaining or relaxing. Enjoy direct access from the living area into the garage, which includes a handy store room for extra storage.

Upstairs features three generously sized bedrooms. The main bedroom boasts its own en-suite bathroom, while the remaining two bedrooms share a full family bathroom – perfect for growing families or guests.

Step outside to a quaint, private garden – just the right size for two small pets to enjoy – and a cozy patio, ideal for morning coffee or weekend braais.

Don't miss this...

## Features

Pets Allowed		Yes	
Interior			
Bedrooms	3		
Bathrooms	2		
Kitchens	1		
Recep. Rooms	1		
Furnished	No		
Exterior			
Garages	1		
Carports / Parkings	2		
Security	Yes		
Pool	No		
Views	False		
Sizes			
Floor Size	139m²		