

Celia Kotze
083 442 8016
celiakotze@dpg.co.za

Contact Rustenburg

014 5942402

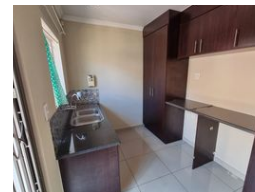
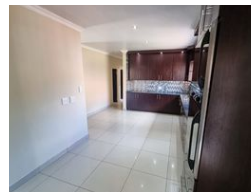
Mystic Blue Office Park
220 Beyers Naude Drive
Rustenburg
0229

FEATURED



SOLE MANDATE

Web Ref DPR18337



R1,725,000

🛏 3 🚿 2 🏠 2

Monthly Bond Repayment R17,512.70

Calculated over 20 years at 10.75% with no deposit.

Transfer Costs R56,539.00 **Bond Costs** R30,875.00

These calculations are only a guide. Please ask your conveyancer for exact calculations.

Monthly Rates R730

Safe and Secure

This beautiful property is situated in a much sought after estate in Waterval East.

The property boasts a double sized living room, open plan dining area with porcelain tiles.

Magnificent kitchen with separate scullery and laundry.

3 Large bedrooms with main ensuite - beautiful stand alone bath.

Large closed off pool and garden.

Double garage and store room.

Don't miss out on the opportunity to live in this prestigious estate.

Features

Pets Allowed	Yes				
Interior		Exterior		Sizes	
Bedrooms	3	Garages	2	Floor Size	300m²
Bathrooms	2	Security	Yes		
Kitchens	1	Pool	Yes		
Recep. Rooms	2	Views	False		
Furnished	No				