



**Lisa Vermaak**  
06621 57674  
lisavermaak@dpg.co.za



**Celia Kotze**  
083 442 8016  
celiakotze@dpg.co.za

Contact Rustenburg

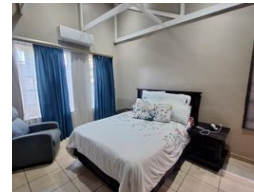
014 5942402

Mystic Blue Office Park  
220 Beyers Naude Drive  
Rustenburg  
0229

## FEATURED



Web Ref DPR19471



## R1,280,000

🛏 3 🚿 2 🚗 2

**Monthly Bond Repayment** R12,994.93

Calculated over 20 years at 10.75% with no deposit.

**Transfer Costs** R37,017.00 **Bond Costs** R27,105.00

These calculations are only a guide. Please ask your conveyancer for exact calculations.

**Monthly Levy** R1,200 **Monthly Rates** R1,500

Your dream home awaits

Situated in a popular and secure complex in Waterfall East, this beautiful home offers a perfect blend of comfort and convenience. Ideal for families or professionals, the property is set in a well-maintained, family-friendly environment that offers peace of mind and a relaxed lifestyle.

The home features three spacious bedrooms and two bathrooms, one of which is an en-suite connected to the main bedroom. The open-plan layout seamlessly connects the kitchen, lounge, and dining area, creating a welcoming space ideal for both everyday living and entertaining.

Step outside to a private patio complete with a built-in braai — perfect for weekend get-togethers and outdoor relaxation. Additional features include a double garage, offering secure parking and extra storage space.

Don't miss out on this opportunity to own a...

## Features

**Pets Allowed** Yes

### Interior

Bedrooms	3
Bathrooms	2
Kitchens	1
Recep. Rooms	2
Furnished	No

### Exterior

Garages	2
Security	Yes
Pool	No
Views	False

### Sizes

Floor Size	105m <sup>2</sup>
Land Size	137m <sup>2</sup>

### Extras

Built In Braai Estate Modern

