



Thys Human
0729896258
thyshuman@dpg.co.za

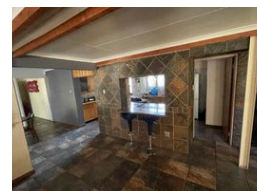
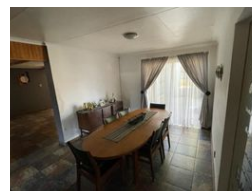
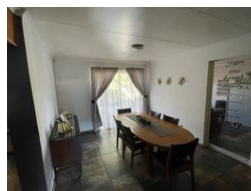
Contact Vanderbijlpark /
Sasolburg

016 4232876

Vision 21, Industrial Park,
Shop 26,
Steel Road,
Duncanville,
Vereeniging



Web Ref DPR13741



R1,182,000

4 3 1

Monthly Bond Repayment R11,800.85

Calculated over 20 years at 10.5% with no deposit.

Transfer Costs R32,851.00 **Bond Costs** R25,220.00

These calculations are only a guide. Please ask your conveyancer for exact calculations.

Monthly Rates R763

Family Home with Numerous Amenities!

This stunning home features a kitchen complete with a breakfast nook, eye-level oven, laundry area, and scullery, offering both functionality and style. The dining room provides a perfect space for family meals, while the open-plan lounge is equipped with air conditioning, a fan, and a TV port, ensuring comfort and entertainment. The home includes four spacious bedrooms, all with built-in cupboards, and three well-appointed bathrooms—two with baths and toilets, and one with a shower and toilet.

Outdoor amenities abound with a refreshing pool, a single garage, and a charming lapa for entertaining. An outside room with a toilet and basin adds convenience, while the irrigation system keeps the garden lush and green. The property is secured with an alarm system, providing peace of mind. This home combines modern living with ample...

Features

Pets Allowed		Yes			
Interior		Exterior		Sizes	
Bedrooms	4	Garages	1	Land Size	1,420m ²
Bathrooms	3	Security	No		
Kitchens	1	Dom. Accom.	1		
Recep. Rooms	2	Pool	Yes		
Furnished	No	Views	False		

