



Niki Boutsikaris
0647069107
nikiboutsikaris@dpg.co.za

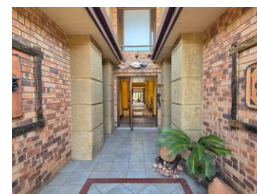
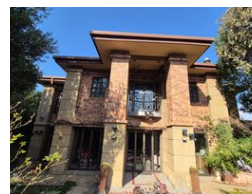
Contact Vanderbijlpark /
Sasolburg

016 4232876

Vision 21, Industrial Park,
Shop 26,
Steel Road,
Duncanville,
Vereeniging



Web Ref DPR20188



R2,300,000

4 4.5 4

Monthly Bond Repayment R22,962.74

Calculated over 20 years at 10.5% with no deposit.

Transfer Costs R98,279.00

Bond Costs R36,530.00

These calculations are only a guide. Please ask your conveyancer for exact calculations.

Monthly Levy R250

Monthly Rates R1,885

Architectural Elegance Meets Luxurious Living

Step into the lap of luxury with this architecturally stunning home nestled within a prestigious estate. A dramatic entrance hall sets the tone, boasting impeccable design and craftsmanship that immediately captivates. Spread across two meticulously planned levels, this residence features four spacious bedrooms, each with its own ensuite bathroom for ultimate privacy and comfort. Downstairs, a convenient guest toilet complements the sophisticated living spaces.

The heart of the home is a gourmet kitchen, complete with double ovens, granite countertops, and a scullery for seamless meal preparation. Adjacent to the kitchen is a stylish dining room, perfect for hosting elegant dinners or casual family meals. Just beyond, a cozy yet expansive TV room invites relaxation, while an indoor enclosed patio with stacker doors and...

Features

Pets Allowed	Yes				
Interior		Exterior		Sizes	
Bedrooms	4	Garages	4	Floor Size	450m ²
Bathrooms	4.5	Carports / Parkings	1	Land Size	750m ²
Kitchens	1	Security	Yes		
Recep. Rooms	2	Pool	No		
Furnished	No	Views	False		

