

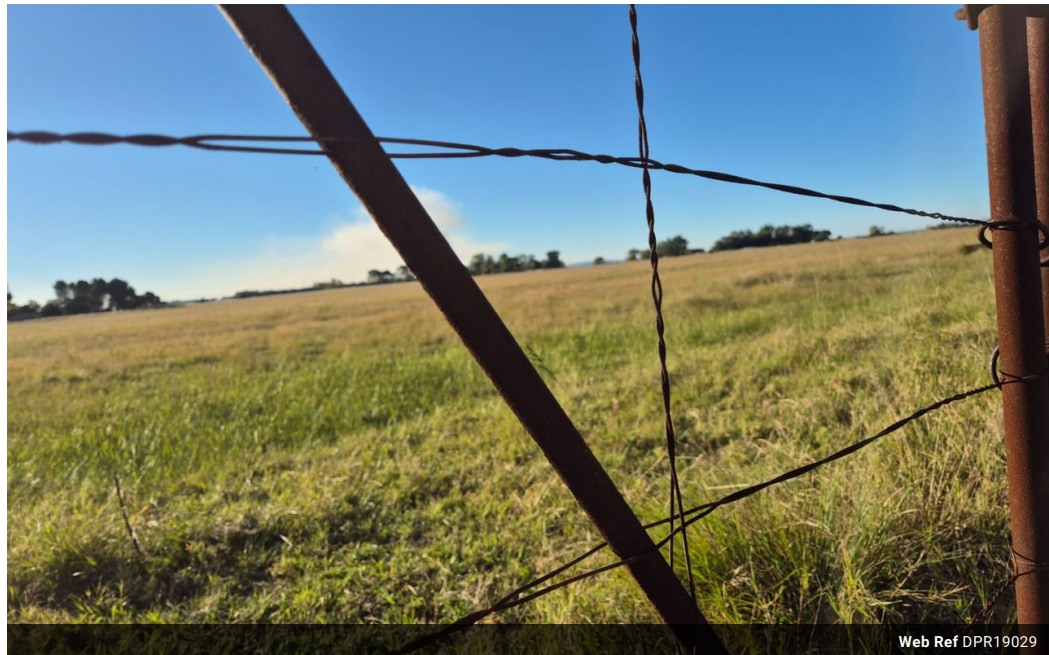


Isabel Lombard
0848304864
isabellombard@dpg.co.za

Contact **Meyerton**

016 0042352

24 Glynn Street
Rothdene,
Meyerton,
1961



Web Ref DPR19029



R377,000

Monthly Bond Repayment R3,827.41

Calculated over 20 years at 10.75% with no deposit.

Transfer Costs R16,806.00 **Bond Costs** R11,960.00

These calculations are only a guide. Please ask your conveyancer for exact calculations.

Monthly Rates R80

Agricultural Plot in Vaal Power

Discover this exceptional 4.7-hectare agricultural plot located in Vaal Power, a serene area near the Lethabo Power Station, just 2.5 km from the R716 road en route to Deneysville. Grassed with 'Oulandsgras' seed, this lovely land has been maintained in a rotational grazing system for cattle, showcasing its agricultural potential. While there are currently no water sources on the property, drilling for water is feasible within 60 meters, and a 5,000L water tank is available as an optional extra. The plot is fully fenced, featuring an old farm gate that opens to a dirt road, and offers reasonably level ground in a close-knit community where neighbors support one another.

Eskom power is accessible upon application and payment of fees, or you can opt for an off-grid lifestyle to keep overhead costs low. Enjoy the tranquility of...

Features