



**Enock Matla**  
071 040 7148  
enockmatla@dpg.co.za

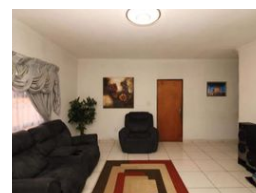
Contact Vanderbijlpark /  
Sasolburg

016 4232876

Vision 21, Industrial Park,  
Shop 26,  
Steel Road,  
Duncanville,  
Vereeniging



Web Ref DPR13673



## R800,000

🛏 3 🚿 1

**Monthly Bond Repayment** R8,121.83

Calculated over 20 years at 10.75% with no deposit.

**Transfer Costs** R25,898.00 **Bond Costs** R19,565.00

These calculations are only a guide. Please ask your conveyancer for exact calculations.

**Monthly Rates** R950

### Charming and Secure Family Home!

This charming home features a well-appointed kitchen, a spacious dining room perfect for family gatherings, and a cozy lounge ideal for relaxation. It boasts three generously sized bedrooms, each with built-in cupboards, providing ample storage space. The property includes a single bathroom equipped with a basin, bath, and toilet.

For added convenience, there is a carport to protect your vehicle. Security is a top priority with this home, offering a security gate, complete fencing, and burglar bars for peace of mind. This delightful residence combines comfort and security, making it the perfect place to call home!

### Features

Pets Allowed		Yes			
Interior				Exterior	
Bedrooms	3			Carports / Parkings	1
Bathrooms	1			Security	Yes
Kitchens	1			Pool	No
Recep. Rooms	2			Views	False
Furnished	No			Sizes	
				Land Size	263m²

