

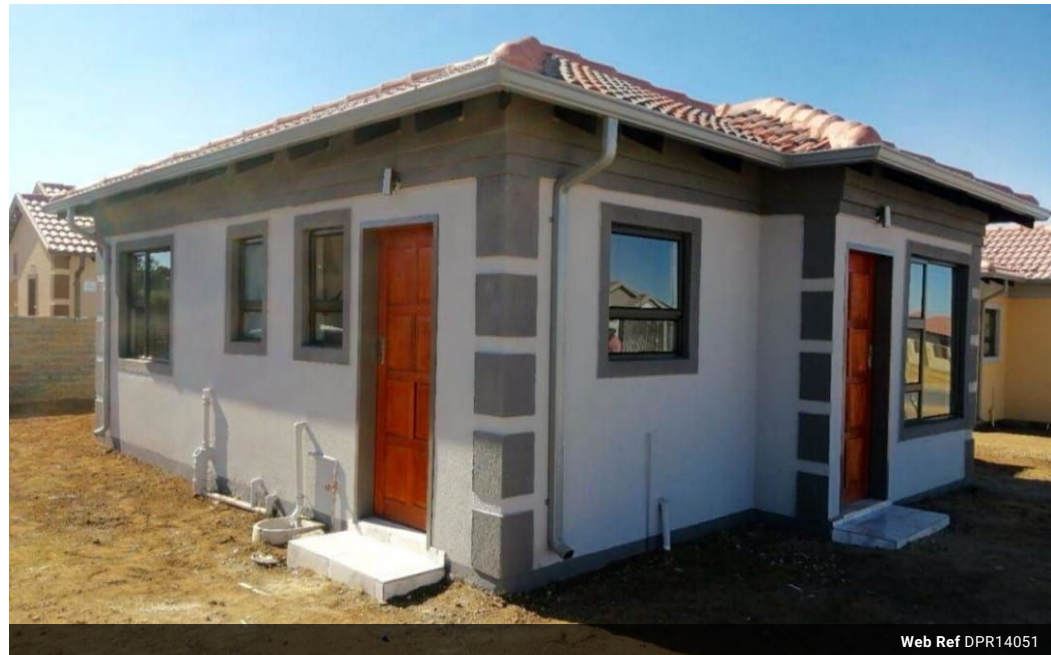


**Enock Matla**  
071 040 7148  
enockmatla@dpg.co.za

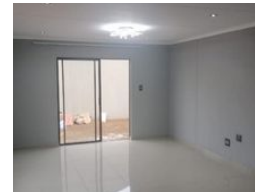
Contact Vanderbijlpark /  
Sasolburg

016 4232876

Vision 21, Industrial Park,  
Shop 26,  
Steel Road,  
Duncanville,  
Vereeniging



Web Ref DPR14051



## R850,000

🛏 4 🚿 2

**Monthly Bond Repayment** R8,629.45

Calculated over 20 years at 10.75% with no deposit.

**Transfer Costs** R28,244.00 **Bond Costs** R21,450.00

These calculations are only a guide. Please ask your conveyancer for exact calculations.

**Monthly Rates** R1,350

### Spacious Four-Bedroom Family Home!

This delightful property offers a comfortable and stylish living environment, starting with a well-equipped kitchen that flows into a charming dining room, perfect for family gatherings and entertaining guests. The inviting lounge provides a cozy space for relaxation and leisure.

The home features four spacious bedrooms, ensuring ample space for family and guests. The main bedroom boasts a private en suite bathroom for added convenience and privacy. Additionally, there is a second bathroom with a bath, basin, and toilet, catering to the needs of the household. This home combines practicality and elegance, making it an ideal choice for those seeking both comfort and functionality.

### Features

<b>Pets Allowed</b>	Yes			
<b>Interior</b>		<b>Exterior</b>		<b>Sizes</b>
Bedrooms	4	Security	Yes	Land Size
Bathrooms	2	Pool	No	265m²
Kitchens	1	Views	False	
Recep. Rooms	2			
Furnished	No			

